

LIGUANG MACHINERY CO., LTD.

E-mail: info@cn-liguang.com www.cn-liguang.com

创造高附加值产品及利润的致胜设备

**Partnering with customers to guarantee success,
through superior technology and quality**



ISO9001:2000



**Booth No. :
Hall15 A03**



**Booth No. :
Hall E3D11**



Injection molding machine

利广机械有限公司
LIGUANG MACHINERY CO., LTD.

公司地址：浙江省宁波经济技术开发区G7区花浦路
Add: Huapu road G7, Zone Economic & Technical Developing District, Ningbo, P.R. China
电话 (Tel): +86-574-86227277 86225358 86221752 86221753
传真 (Fax): +86-574-86222066 邮编 (PC): 315803



Injection molding machine

Injection moulding machine manufacture, and through working in close partnership with its customers, ensures "Li-Guang" meaning "larger profits-for you!"

Liguang's range of machines include:
M0: High precision injection moulding machine with proportional back pressure control
M1: Closed loop Injection moulding machine with proportional back pressure control
HV: energy efficient Injection moulding machine with variable pump
EV: High precision energy efficient Injection moulding machine with closed loop variable pump
ES: energy efficient Injection moulding machine with servo motor
HS: High speed high precision Injection

moulding machine with servo valve and accumulator
DS: Multi-colour Injection moulding machine with variable pump
The FL series machines feature high precision, high stability, high rigidity, low noise, and energy saving characteristics.

Liguang will continue to innovate and broaden its field of expertise to meet the various needs of its customers, with machines widely used in the field of precision electronic, automotive, chemical, engineering, pharmaceutical, packaging, aviation and aeronautical industries, both in Asia and around the world.

创造高附加值产品及利润的致胜设备

Partnering with customers to guarantee success,
Through superior technology and quality

利广机械技术团队厚积工作母机设计制造、精密加工、组配、机电整合、自动控制技术与射出机制造实力，开发出全新FL系列M0,M1,HV,EV,HD,DC,HS,ES 注射成型机。FL系列具有高精密、高稳定性、高刚性、省电、静音等特点，是高品质射出的最佳选择。利广身为中国市场高品质射出成型机第一流制造厂商，

以丰富的经验和整合技术，顺应产业界高附加值、高精品质成型需要。以射出成型为中心，持续创新，不断扩展其技术领域，满足业界的各项需要和信赖。FL系列注塑机广泛用于精密电子、汽车零配件、日用品、化工容器、包装、医疗器材、家电、信息产业及航空、航天领域。利广注塑机已获得国内外客户的高度好评。

LIGUANG Plastic Injection Molding Machine

LIGUANG



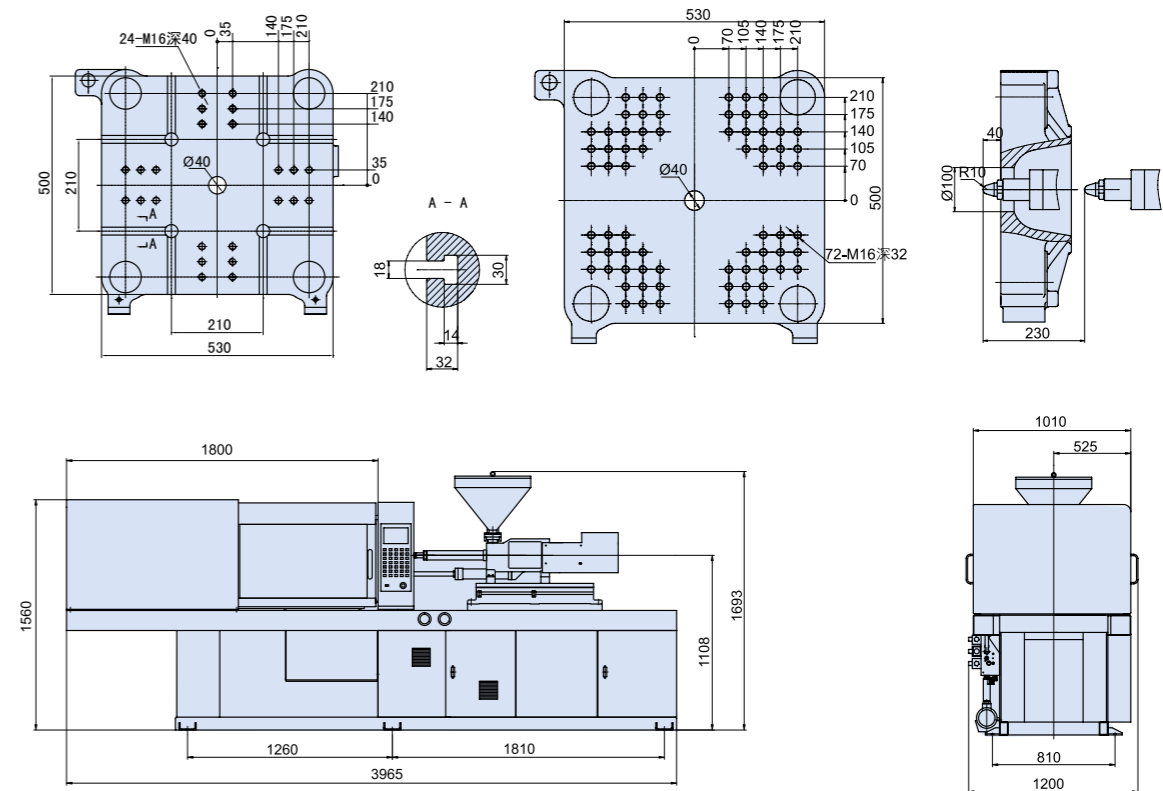
Technical Parameter

注射装置	INJECTION UNIT		FL 50			FL 90		
螺杆编号	SCREW CODE	—	A	B	C	A	B	C
螺杆直径	SCREW DIAMETER	mm	18	20	22	28	32	36
注射压力	INJECTION PRESSURE	kgf/cm ²	2840	2300	1900	2450	1880	1480
每次注射量(硬胶)	SHOT WEIGHT(P.S)	g	19	23	28	71	92	117
		oz	0.67	0.81	1	2.5	3.2	4.1
螺杆长径比L:D	SCREW L:D	—	22:1	20:1	18:1	22:1	22:1	22:1
螺杆行程	SCREW STROKE	mm	80			125		
螺杆转速	SCREW SPEED	r.p.m	0-300			0-180		
注射速率	INJECTION RATE	cm ³ /sec	23.7	29.2	35.4	51	67	85
塑化能力	PLASTICIZING CAPACITY	g/sec	2.6	3.2	3.7	7	10	13
合模装置	CLAMPING UNIT							
锁模形式	TYPE OF CLAMPING UNITS	—	双曲肘			双曲肘		
锁模力	CLAMPING FORCE	tons	50			90		
锁模行程	MOULD CLAMPING STROKE	mm	320			320		
模板最大开距	MAX DAYLIGHT OPENING	mm	680			680		
容模量(最小-最大)	MOULD THICKNESS(MIN-MAX)	mm	140-360			140-360		
拉杆内距(WxH)	SPACE BETWEEN TIE BAR(WxH)	mm	360x360			360x360		
液压顶出力	HYDRAULIC EJECTION FORCE	tons	2.2			2.2		
顶出行程	HYDRAULIC EJECTION STROKE	mm	100			100		
其它	OTHERS							
油压系统压力	SYSTEM PRESSURE	kgf/cm ²	100			140		
油泵马达功率	PUMP DRIVING MOTOR	kw	7.5			11		
电热功率	HEATER CAPACITY	kw	2.3			4.6		
温度控制区	TEMPERATURE CONTROL ZONES	—	3+1			4+1		
油箱容积	TANK CAPACITY	L	190 (100)			190 (100)		
外形尺寸(长x宽x高)	MACHINE DIMENSION(LxWxH)	mm	3965x1200x1693			3965x1200x1684		
机器重量	MACHINE WEIGHT	tons	2.8			2.8		

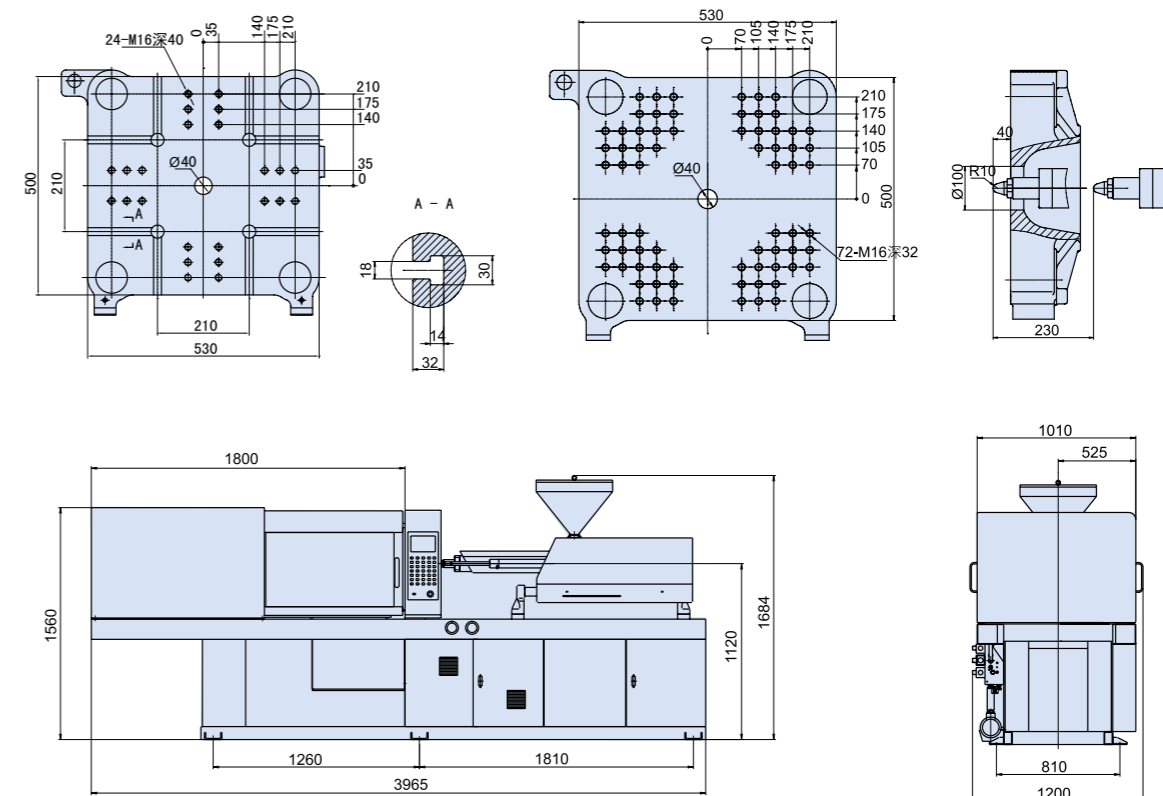
注：根据聚苯乙烯(P.S)比重1.05。由于技术不断发展，设计的改进及更新，以上规格如有更改，恕不另行通知。

Note: based on polystyrene at specific gravity of 1.05. Due to continuous improvements, we reserve the right to amend any aspect of the above specifications without prior notice.

FL 50 模板图, 机器外型图/Platen Dimension



FL 90 模板图, 机器外型图/Platen Dimension



LIGUANG Plastic Injection Molding Machine

LIGUANG



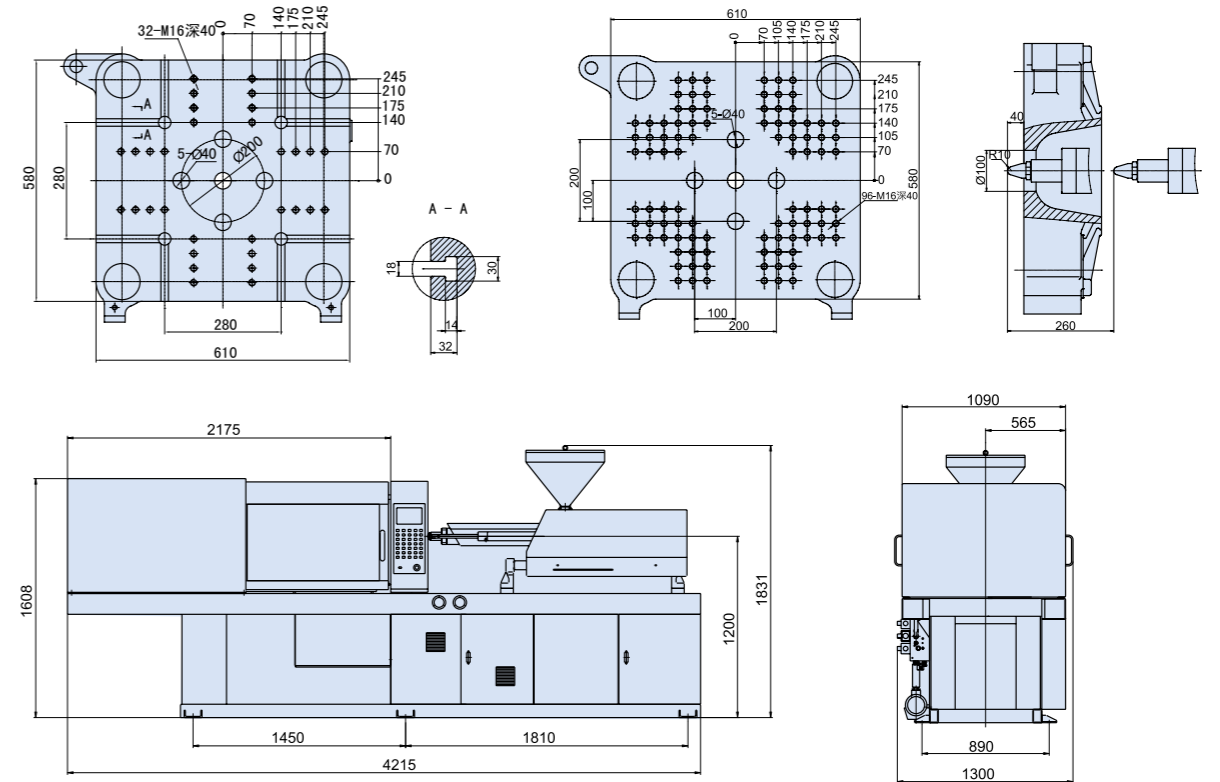
Technical Parameter

注射装置	INJECTION UNIT		FL 130			FL 170		
螺杆编号	SCREW CODE	—	A	B	C	A	B	C
螺杆直径	SCREW DIAMETER	mm	35	40	45	40	45	50
注射压力	INJECTION PRESSURE	kgf/cm ²	2460	1880	1480	2490	1970	1580
每次注射量(硬胶)	SHOT WEIGHT(P.S)	g	160	208	264	237	301	370
		oz	5.5	7.3	9.3	8.3	10.6	13
螺杆长径比L:D	SCREW L:D	—	22:1	20:1	18:1	22:1	22:1	20:1
螺杆行程	SCREW STROKE	mm	180			205		
螺杆转速	SCREW SPEED	r.p.m	0-170			0-170		
注射速率	INJECTION RATE	cm ³ /sec	75	98	124	91	115	142
塑化能力	PLASTICIZING CAPACITY	g/sec	10.8	15	19	13.8	18.8	22.7
合模装置	CLAMPING UNIT							
锁模形式	TYPE OF CLAMPING UNITS	—	双曲肘			双曲肘		
锁模力	CLAMPING FORCE	tons	130			170		
锁模行程	MOULD CLAMPING STROKE	mm	360			420		
模板最大开距	MAX DAYLIGHT OPENING	mm	770			920		
容模量(最小-最大)	MOULD THICKNESS(MIN-MAX)	mm	150-410			160-500		
拉杆内距(WxH)	SPACE BETWEEN TIE BAR(WxH)	mm	410x410			460x460		
液压顶出力	HYDRAULIC EJECTION FORCE	tons	3.8			4.9		
顶出行程	HYDRAULIC EJECTION STROKE	mm	100			120		
其它	OTHERS							
油压系统压力	SYSTEM PRESSURE	kgf/cm ²	160			160		
油泵马达功率	PUMP DRIVING MOTOR	kw	15			18.5		
电热功率	HEATER CAPACITY	kw	6.8			11		
温度控制区	TEMPERATURE CONTROL ZONES	—	4+1			4+1		
油箱容积	TANK CAPACITY	L	280 (130)			350 (160)		
外形尺寸(长x宽x高)	MACHINE DIMENSION(LxWxH)	mm	4215x1300x1831			5075x1470x1925		
机器重量	MACHINE WEIGHT	tons	4.5			5.5		

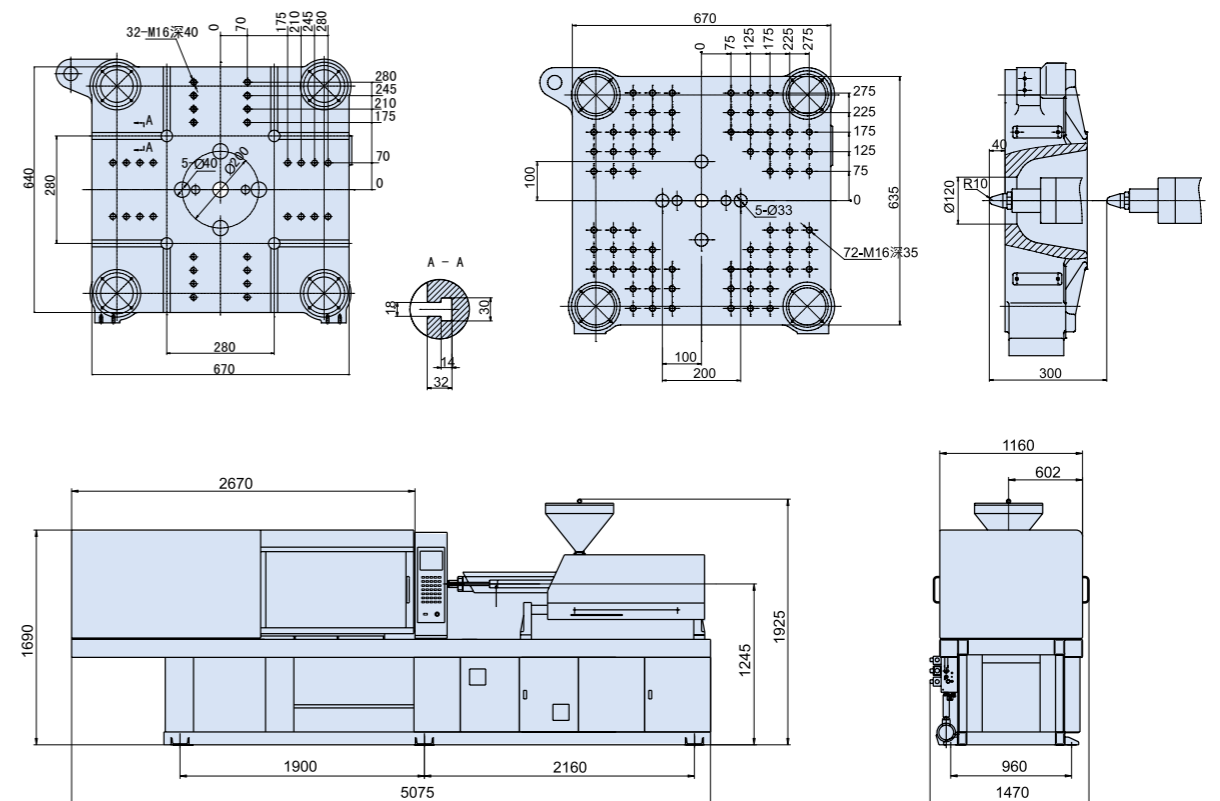
注：根据聚苯乙烯(P.S)比重1.05。由于技术不断发展，设计的改进及更新，以上规格如有更改，恕不另行通知。

Note: based on polystyrene at specific gravity of 1.05. Due to continuous improvements, we reserve the right to amend any aspect of the above specifications without prior notice.

FL 130 模板图, 机器外型图/Platen Dimension



FL 170 模板图, 机器外型图/Platen Dimension



LIGUANG Plastic Injection Molding Machine

LIGUANG



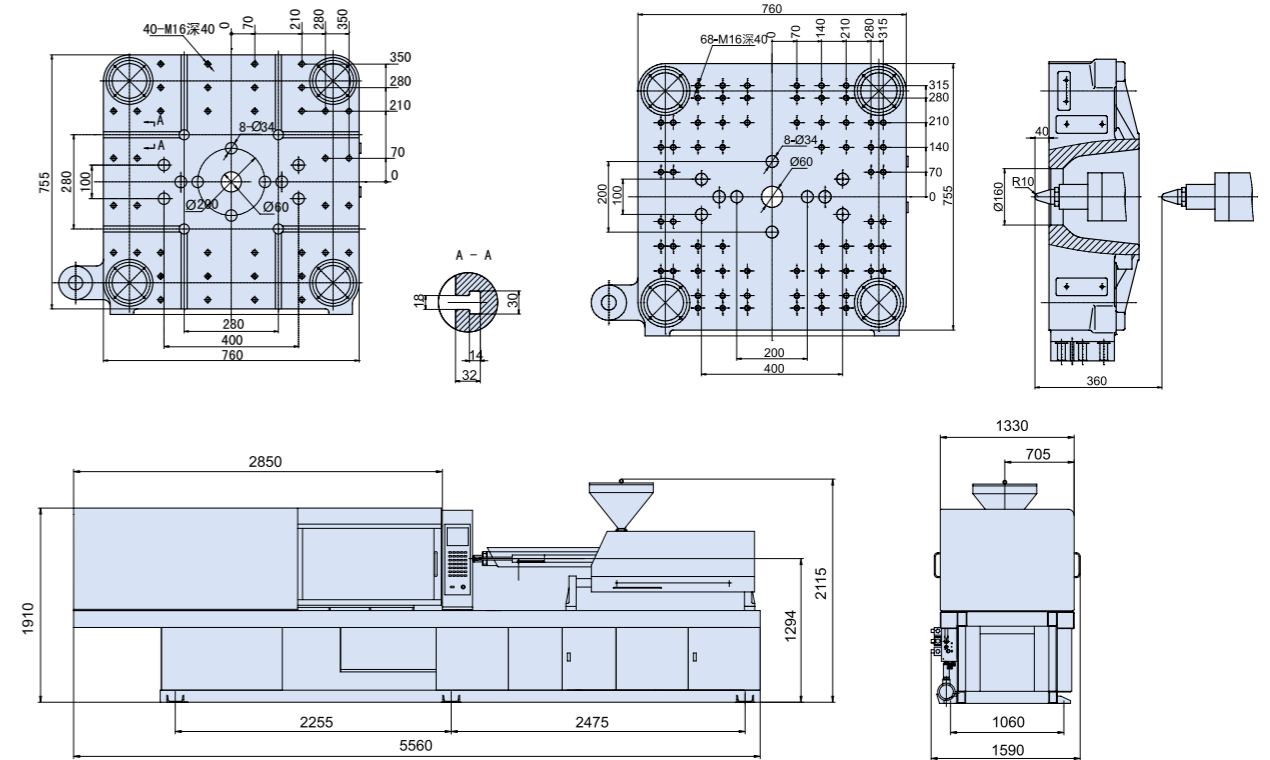
Technical Parameter

注射装置	INJECTION UNIT		FL 220			FL 260		
螺杆编号	SCREW CODE	—	A	B	C	A	B	C
螺杆直径	SCREW DIAMETER	mm	45	50	55	50	55	60
注射压力	INJECTION PRESSURE	kgf/cm ²	2311	1872	1547	2340	1933	1625
每次注射量(硬胶)	SHOT WEIGHT(P.S)	g	345	426	515	480	581	692
		oz	12	15	18	17	20.5	24
螺杆长径比L:D	SCREW L:D	—	22.4:1	20.2:1	18.4:1	22:1	20:1	18.4:1
螺杆行程	SCREW STROKE	mm	235			265		
螺杆转速	SCREW SPEED	r.p.m	0-170			0-190		
注射速率	INJECTION RATE	cm ³ /sec	136	168	203	171	207	246
塑化能力	PLASTICIZING CAPACITY	g/sec	20	25	30	25	30	36
合模装置	CLAMPING UNIT							
锁模形式	TYPE OF CLAMPING UNITS	—	双曲肘			双曲肘		
锁模力	CLAMPING FORCE	tons	220			260		
锁模行程	MOULD CLAMPING STROKE	mm	480			550		
模板最大开距	MAX DAYLIGHT OPENING	mm	1030			1150		
容模量(最小-最大)	MOULD THICKNESS(MIN-MAX)	mm	200-550			220-600		
拉杆内距(WxH)	SPACE BETWEEN TIE BAR(WxH)	mm	515x510			570x570		
液压顶出力	HYDRAULIC EJECTION FORCE	tons	7			7		
顶出行程	HYDRAULIC EJECTION STROKE	mm	150			150		
其它	OTHERS							
油压系统压力	SYSTEM PRESSURE	kgf/cm ²	160			160		
油泵马达功率	PUMP DRIVING MOTOR	kw	22			30		
电热功率	HEATER CAPACITY	kw	11.5			14		
温度控制区	TEMPERATURE CONTROL ZONES	—	5+1			5+1		
油箱容积	TANK CAPACITY	L	360 (320)			500 (360)		
外形尺寸(长x宽x高)	MACHINE DIMENSION(LxWxH)	mm	5560x1590x2115			6020x1720x2165		
机器重量	MACHINE WEIGHT	tons	8			10		

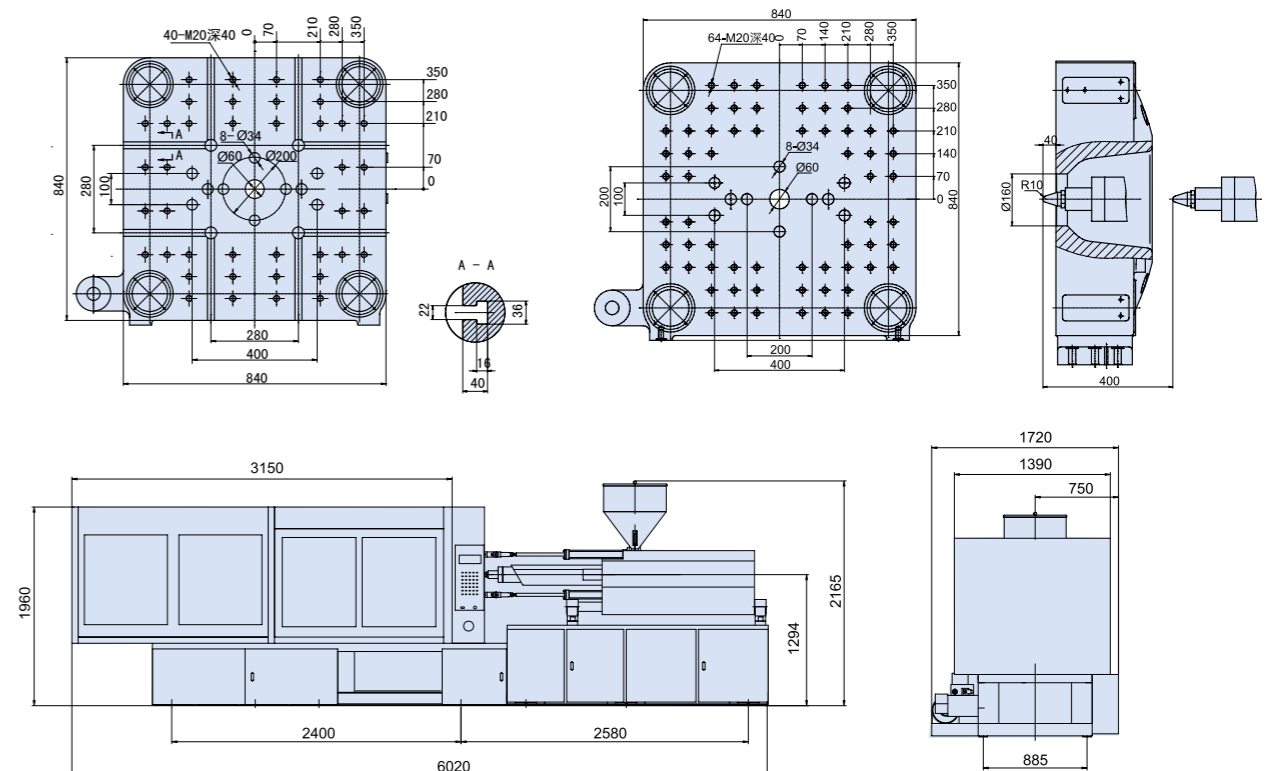
注：根据聚苯乙烯(P.S)比重1.05。由于技术不断发展，设计的改进及更新，以上规格如有更改，恕不另行通知。

Note: based on polystyrene at specific gravity of 1.05. Due to continuous improvements, we reserve the right to amend any aspect of the above specifications without prior notice.

FL 220 模板图, 机器外型图/Platen Dimension



FL 260 模板图, 机器外型图/Platen Dimension



LIGUANG Plastic Injection Molding Machine

LIGUANG



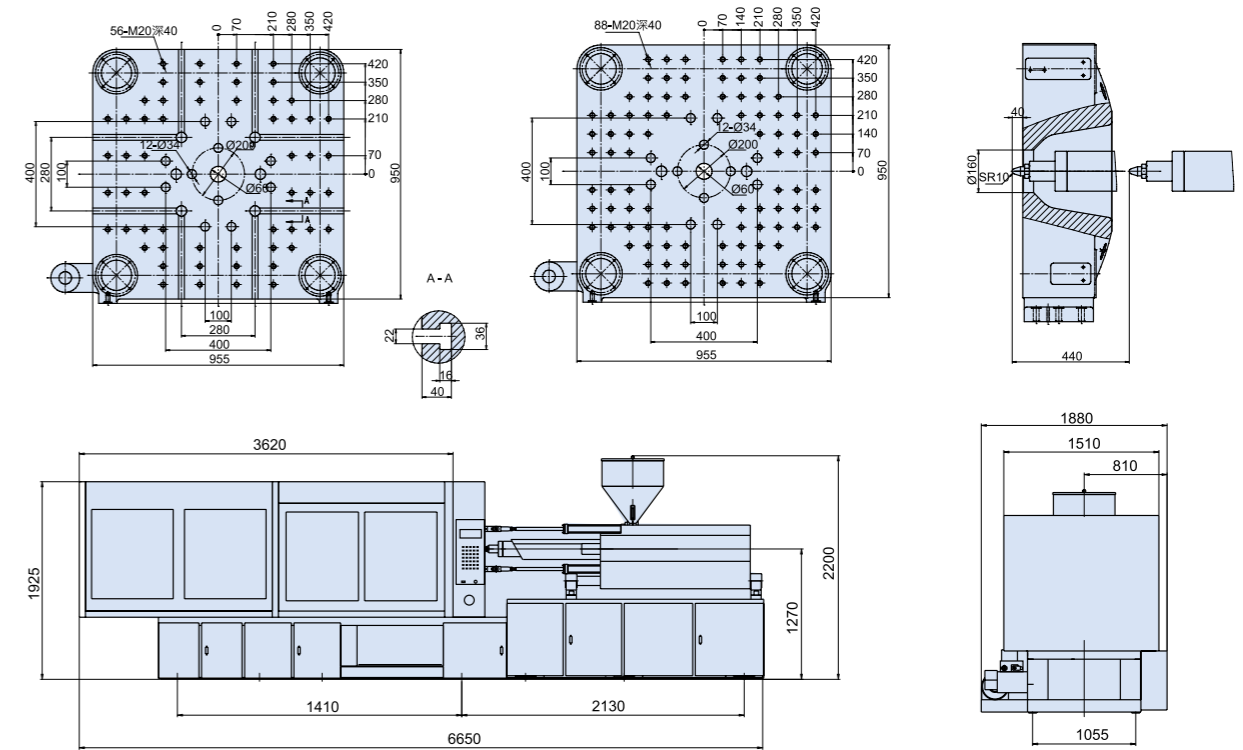
Technical Parameter

注射装置	INJECTION UNIT		FL320			FL 380		
螺杆编号	SCREW CODE	—	A	B	C	A	B	C
螺杆直径	SCREW DIAMETER	mm	55	60	65	65	70	75
注射压力	INJECTION PRESSURE	kgf/cm ²	2190	1840	1570	2083	1800	1564
每次注射量(硬胶)	SHOT WEIGHT(P.S)	g	625	744	873	980	1137	1305
		oz	22	26	31	35	40	46
螺杆长径比L:D	SCREW L:D	—	22:1	20:1	18.5:1	21.6:1	20:1	19:1
螺杆行程	SCREW STROKE	mm	285			320		
螺杆转速	SCREW SPEED	r.p.m	0-140			5-200		
注射速率	INJECTION RATE	cm ³ /sec	192	229	269	275	318	365
塑化能力	PLASTICIZING CAPACITY	g/sec	29	34	38	45	52	60
合模装置	CLAMPING UNIT							
锁模形式	TYPE OF CLAMPING UNITS	—	双曲肘			双曲肘		
锁模力	CLAMPING FORCE	tons	320			380		
锁模行程	MOULD CLAMPING STROKE	mm	650			680		
模板最大开距	MAX DAYLIGHT OPENING	mm	1310			1400		
容模量(最小-最大)	MOULD THICKNESS(MIN-MAX)	mm	250-660			250-720		
拉杆内距(WxH)	SPACE BETWEEN TIE BAR(WxH)	mm	660x660			710x710		
液压顶出力	HYDRAULIC EJECTION FORCE	tons	9			11		
顶出行程	HYDRAULIC EJECTION STROKE	mm	180			200		
其它	OTHERS							
油压系统压力	SYSTEM PRESSURE	kgf/cm ²	160			160		
油泵马达功率	PUMP DRIVING MOTOR	kw	30			37		
电热功率	HEATER CAPACITY	kw	17			19		
温度控制区	TEMPERATURE CONTROL ZONES	—	5+1			5+1		
油箱容积	TANK CAPACITY	L	750 (380)			1000 (400)		
外形尺寸(长x宽x高)	MACHINE DIMENSION(LxWxH)	mm	6650x1880x2200			7470x1950x2220		
机器重量	MACHINE WEIGHT	tons	13			15.5		

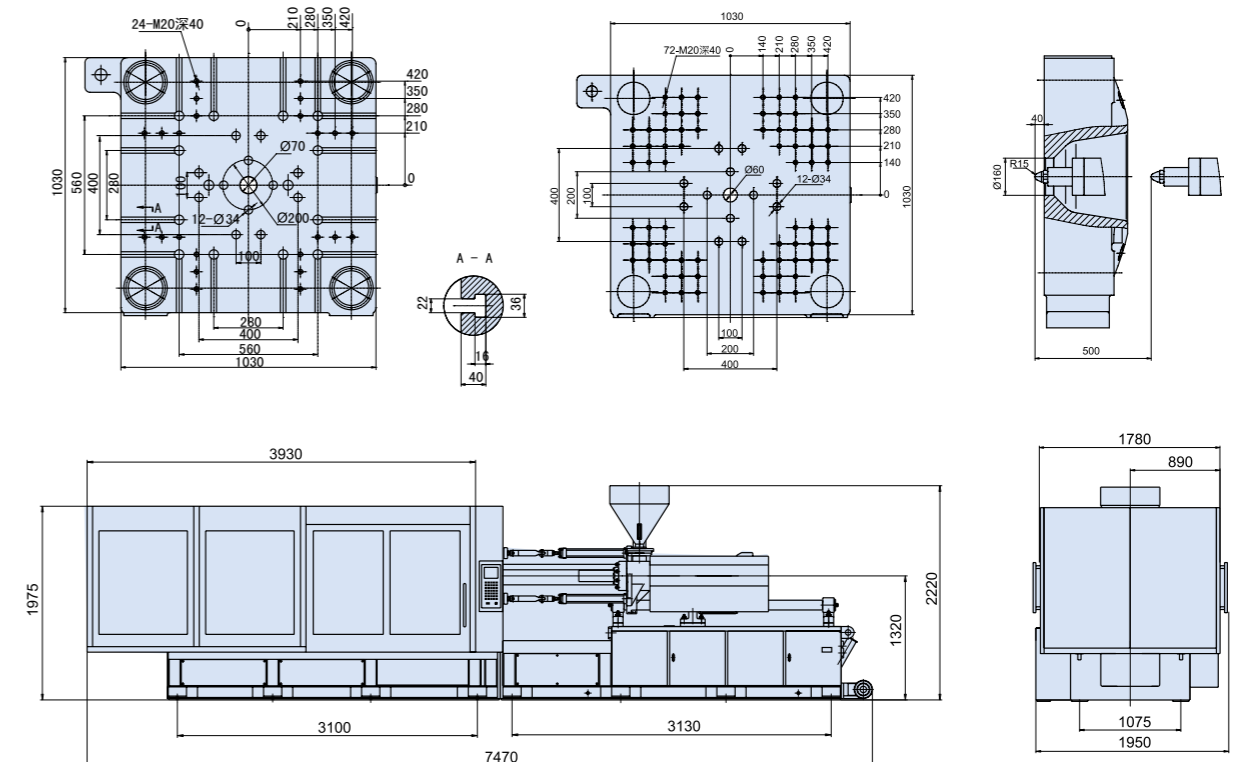
注：根据聚苯乙烯(P.S)比重1.05。由于技术不断发展，设计的改进及更新，以上规格如有更改，恕不另行通知。

Note: based on polystyrene at specific gravity of 1.05. Due to continuous improvements, we reserve the right to amend any aspect of the above specifications without prior notice.

FL 320 模板图, 机器外型图/Platen Dimension



FL 380 模板图, 机器外型图/Platen Dimension



LIGUANG Plastic Injection Molding Machine

LIGUANG



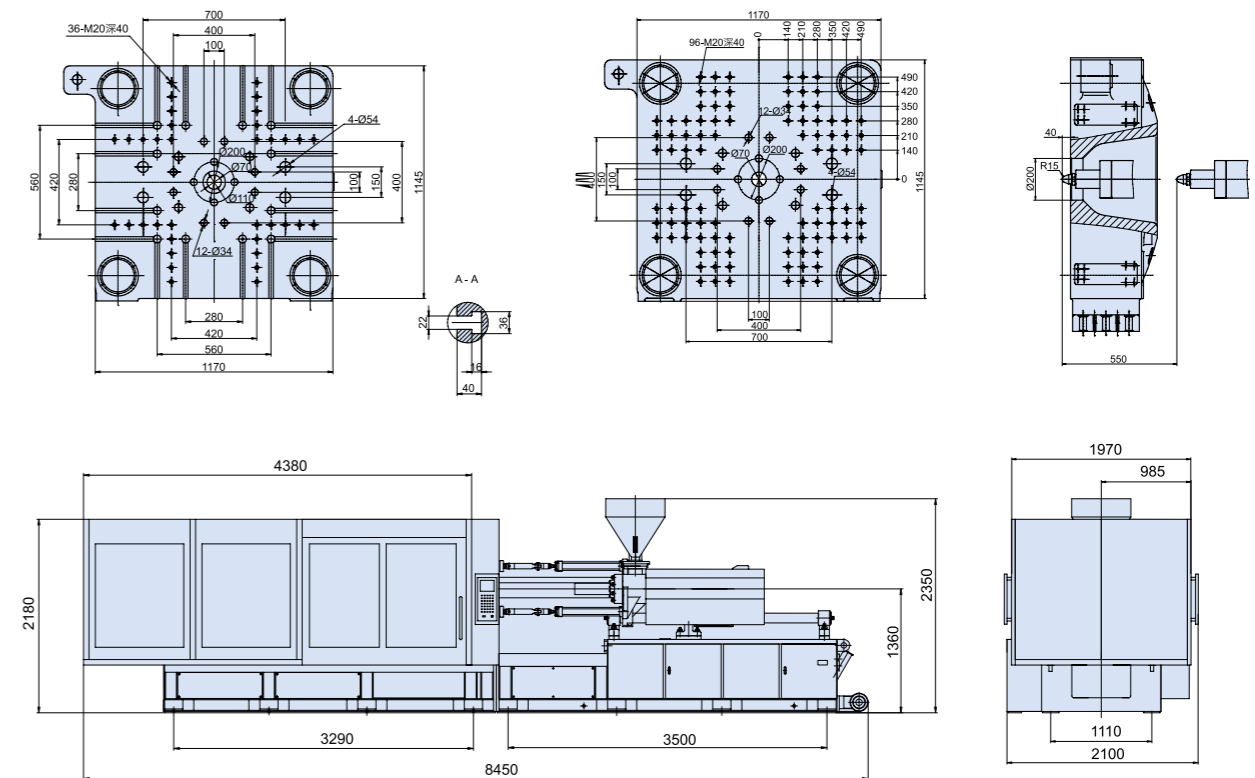
Technical Parameter

注射装置		INJECTION UNIT	FL480			FL 580		
螺杆编号	SCREW CODE	—	A	B	C	A	B	C
螺杆直径	SCREW DIAMETER	mm	70	75	85	75	80	85
注射压力	INJECTION PRESSURE	kgf/cm ²	2121	1848	1439	2100	1850	1640
每次注射量(硬胶)	SHOT WEIGHT(P.S)	g	1280	1469	1887	1571	1788	2018
		oz	45	51	66	55	63	71
螺杆长径比L:D	SCREW L:D	—	23.5:1	22:1	19.4:1	22:1	20.5:1	19.3:1
螺杆行程	SCREW STROKE	mm	360			385		
螺杆转速	SCREW SPEED	r.p.m	5-150			5-130		
注射速率	INJECTION RATE	cm ³ /sec	323	371	476	351	400	451
塑化能力	PLASTICIZING CAPACITY	g/sec	49	58	80	59	68	86
合模装置		CLAMPING UNIT						
锁模形式	TYPE OF CLAMPING UNITS	—	双曲肘			双曲肘		
锁模力	CLAMPING FORCE	tons	480			580		
锁模行程	MOULD CLAMPING STROKE	mm	750			850		
模板最大开距	MAX DAYLIGHT OPENING	mm	1550			1700		
容模量(最小-最大)	MOULD THICKNESS(MIN-MAX)	mm	300-800			350-850		
拉杆内距(WxH)	SPACE BETWEEN TIE BAR(WxH)	mm	810x785			860x860		
液压顶出力	HYDRAULIC EJECTION FORCE	tons	15			16.6		
顶出行程	HYDRAULIC EJECTION STROKE	mm	200			250		
其它		OTHERS						
油压系统压力	SYSTEM PRESSURE	kgf/cm ²	175			160		
油泵马达功率	PUMP DRIVING MOTOR	kw	18.5+30			18.5+37		
电热功率	HEATER CAPACITY	kw	24.7			28		
温度控制区	TEMPERATURE CONTROL ZONES	—	6+1			6+1		
油箱容积	TANK CAPACITY	L	950 (480)			1300 (500)		
外形尺寸(长x宽x高)	MACHINE DIMENSION(LxWxH)	mm	8450x2100x2350			9120x2120x2460		
机器重量	MACHINE WEIGHT	tons	22			32		

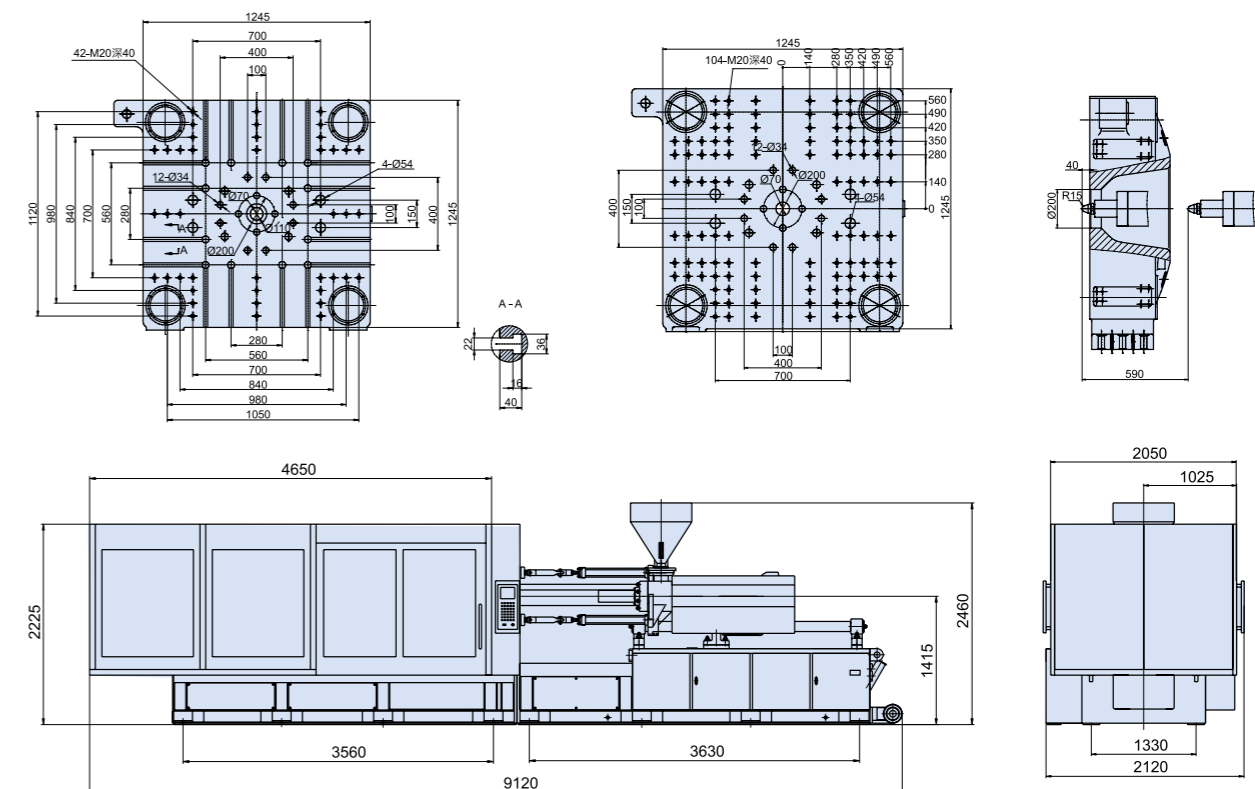
注：根据聚苯乙烯(P.S)比重1.05。由于技术不断发展，设计的改进及更新，以上规格如有更改，恕不另行通知。

Note: based on polystyrene at specific gravity of 1.05. Due to continuous improvements, we reserve the right to amend any aspect of the above specifications without prior notice.

FL 480 模板图, 机器外型图/Platen Dimension



FL 580 模板图, 机器外型图/Platen Dimension



LIGUANG Plastic Injection Molding Machine

LIGUANG



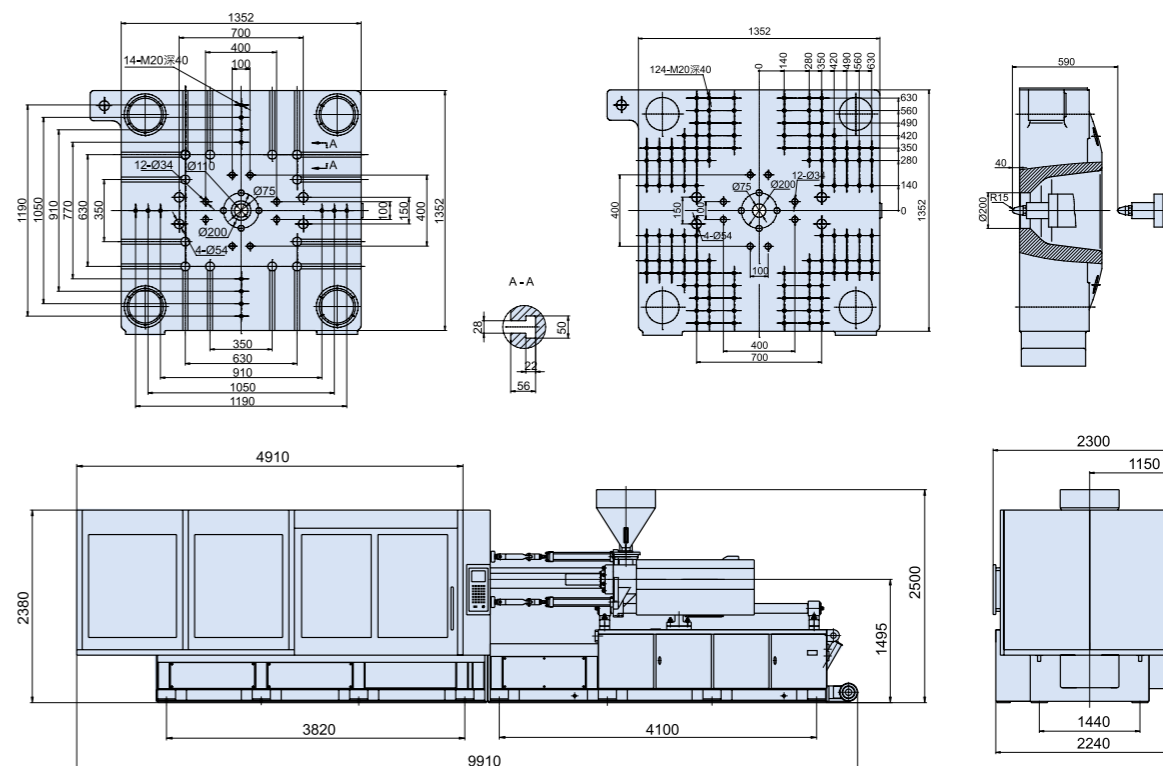
Technical Parameter

注射装置	INJECTION UNIT		FL 700			FL 800		
螺杆编号	SCREW CODE	—	A	B	C	A	B	C
螺杆直径	SCREW DIAMETER	mm	85	90	100	90	100	110
注射压力	INJECTION PRESSURE	kgf/cm ²	2190	1950	1580	2250	1820	1500
每次注射量(硬胶)	SHOT WEIGHT(P.S)	g	2174	2438	3010	2702	3336	4037
		oz	76	86	106	95	117	142
螺杆长径比L:D	SCREW L:D	—	21:1	20:1	18:1	22:1	20:1	18:1
螺杆行程	SCREW STROKE	mm	415			460		
螺杆转速	SCREW SPEED	r.p.m	5-120			5-130		
注射速率	INJECTION RATE	cm ³ /sec	486	545	673	540	667	807
塑化能力	PLASTICIZING CAPACITY	g/sec	64	72	89	65	80	95.8
合模装置	CLAMPING UNIT							
锁模形式	TYPE OF CLAMPING UNITS	—	双曲肘			双曲肘		
锁模力	CLAMPING FORCE	tons	700			800		
锁模行程	MOULD CLAMPING STROKE	mm	900			1000		
模板最大开距	MAX DAYLIGHT OPENING	mm	1800			2000		
容模量(最小-最大)	MOULD THICKNESS(MIN-MAX)	mm	400-900			450-1000		
拉杆内距(WxH)	SPACE BETWEEN TIE BAR(WxH)	mm	920x920			1000x1000		
液压顶出力	HYDRAULIC EJECTION FORCE	tons	18			20		
顶出行程	HYDRAULIC EJECTION STROKE	mm	285			310		
其它	OTHERS							
油压系统压力	SYSTEM PRESSURE	kgf/cm ²	160			160		
油泵马达功率	PUMP DRIVING MOTOR	kw	37+37			37+45		
电热功率	HEATER CAPACITY	kw	30			36		
温度控制区	TEMPERATURE CONTROL ZONES	—	6+1			7+1		
油箱容积	TANK CAPACITY	L	1300 (900)			1800 (1000)		
外形尺寸(长x宽x高)	MACHINE DIMENSION(LxWxH)	mm	9910x2440x2500			10800x2510x2560		
机器重量	MACHINE WEIGHT	tons	35			48		

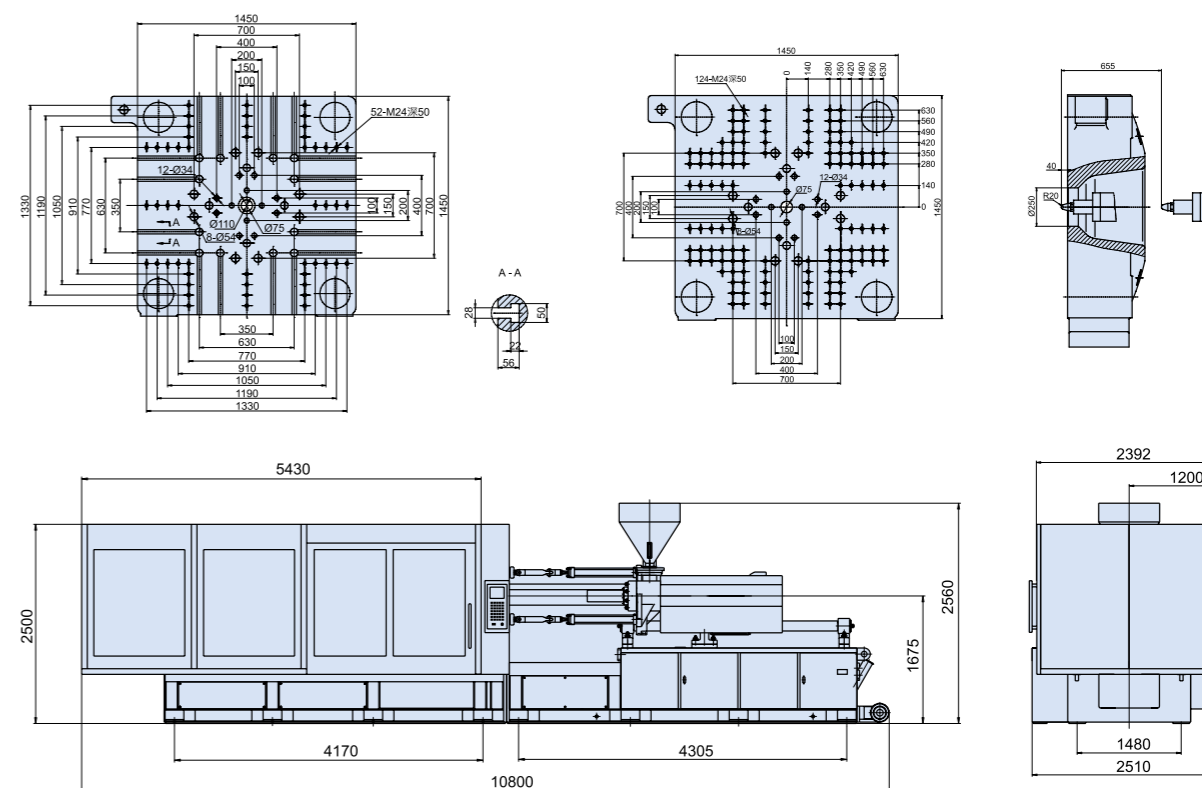
注：根据聚苯乙烯(P.S)比重1.05。由于技术不断发展，设计的改进及更新，以上规格如有更改，恕不另行通知。

Note: based on polystyrene at specific gravity of 1.05. Due to continuous improvements, we reserve the right to amend any aspect of the above specifications without prior notice.

FL 700 模板图, 机器外型图/Platen Dimension



FL 800 模板图, 机器外型图/Platen Dimension



LIGUANG Plastic Injection Molding Machine

LIGUANG



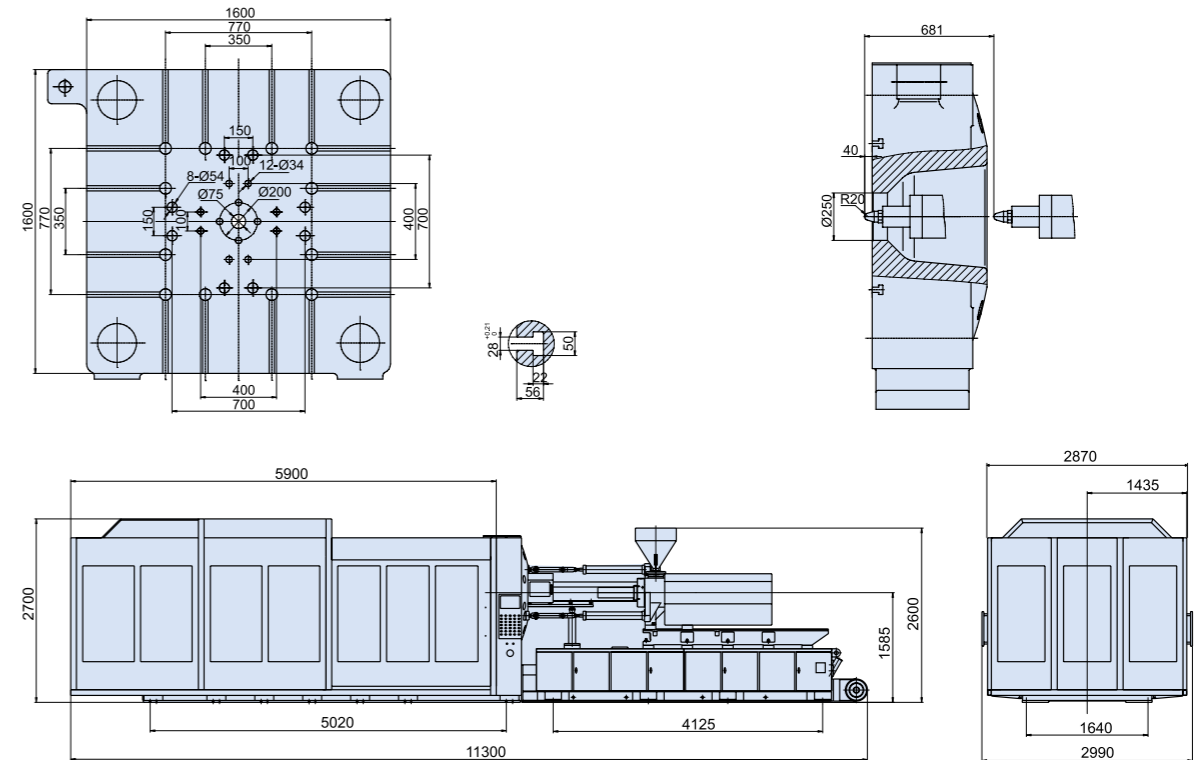
Technical Parameter

注射装置	INJECTION UNIT		FL 1000			FL 1300		
螺杆编号	SCREW CODE	—	A	B	C	A	B	C
螺杆直径	SCREW DIAMETER	mm	100	110	120	110	120	130
注射压力	INJECTION PRESSURE	kgf/cm ²	2180	1800	1510	2110	1770	1510
每次注射量(硬胶)	SHOT WEIGHT(P.S)	g	3626	4388	5222	4739	5640	6619
		oz	128	155	184	167	198	233
螺杆长径比L:D	SCREW L:D	—	22:1	20:1	18:1	22:1	20:1	18.5:1
螺杆行程	SCREW STROKE	mm	500			540		
螺杆转速	SCREW SPEED	r.p.m	5-100			5-120 5-100		
注射速率	INJECTION RATE	cm ³ /sec	682	826	983	807	960	1127
塑化能力	PLASTICIZING CAPACITY	g/sec	80	96.9	115	141	168	157
合模装置	CLAMPING UNIT							
锁模形式	TYPE OF CLAMPING UNITS	—	双曲肘			双曲肘		
锁模力	CLAMPING FORCE	tons	1000			1300		
锁模行程	MOULD CLAMPING STROKE	mm	1100			1250		
模板最大开距	MAX DAYLIGHT OPENING	mm	2200			2500		
容模量(最小-最大)	MOULD THICKNESS(MIN-MAX)	mm	500-1100			550-1250		
拉杆内距(WxH)	SPACE BETWEEN TIE BAR(WxH)	mm	1100x1100			1300x1200		
液压顶出力	HYDRAULIC EJECTION FORCE	tons	22			22		
顶出行程	HYDRAULIC EJECTION STROKE	mm	340			380		
其它	OTHERS							
油压系统压力	SYSTEM PRESSURE	kgf/cm ²	160			160		
油泵马达功率	PUMP DRIVING MOTOR	kw	45+55			55+55		
电热功率	HEATER CAPACITY	kw	44			63		
温度控制区	TEMPERATURE CONTROL ZONES	—	8+1			8+1		
油箱容积	TANK CAPACITY	L	2400 (1200)			2500 (1300)		
外形尺寸(长x宽x高)	MACHINE DIMENSION(LxWxH)	mm	11300x2990x2700			12760x3280x2795		
机器重量	MACHINE WEIGHT	tons	58			78		

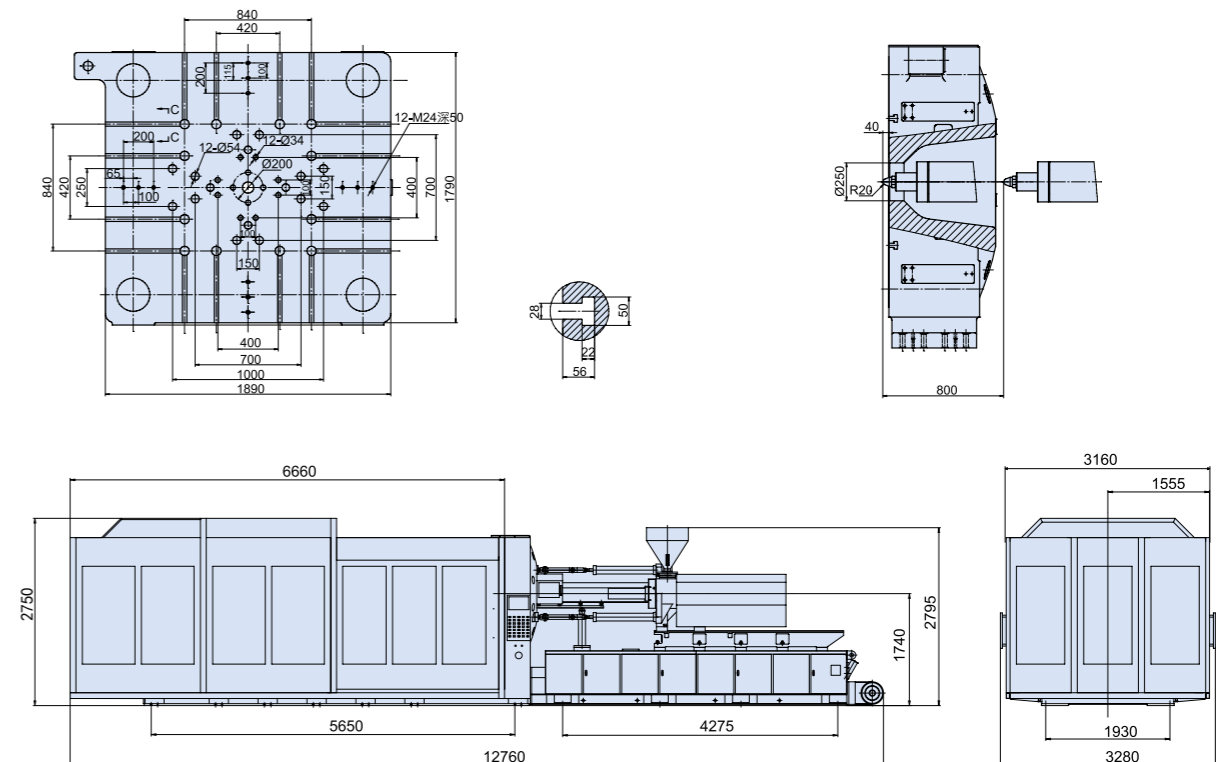
注：根据聚苯乙烯(P.S)比重1.05。由于技术不断发展，设计的改进及更新，以上规格如有更改，恕不另行通知。

Note: based on polystyrene at specific gravity of 1.05. Due to continuous improvements, we reserve the right to amend any aspect of the above specifications without prior notice.

FL 1000 模板图, 机器外型图/Platen Dimension



FL 1300 模板图, 机器外型图/Platen Dimension



LIGUANG Plastic Injection Molding Machine

LIGUANG



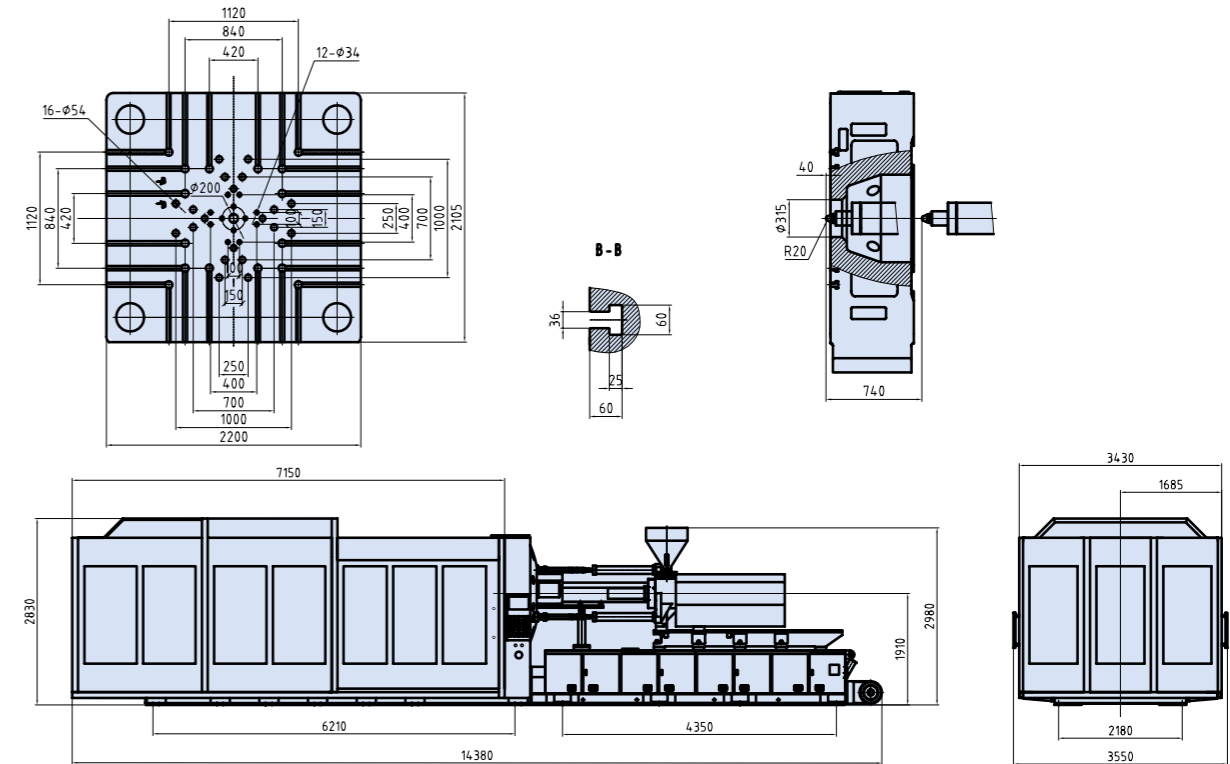
Technical Parameter

注射装置	INJECTION UNIT		FL 1600ES				FL 1850ES			
射台编号	SHOT UNIT	—	13927				13927			
螺杆编号	SCREW CODE	—	A	B	C	D	A	B	C	D
螺杆直径	SCREW DIAMETER	mm	120	130	140	150	120	130	140	150
注射压力	INJECTION PRESSURE	kgf/cm ²	1956	1666	1437	1252	1956	1666	1437	1252
每次注射量(硬胶)	SHOT WEIGHT(P.S)	g	6580	7722	8956	10282	6580	7722	8956	10282
		oz	232	272	316	363	232	272	316	363
螺杆长径比L:D	SCREW L:D	—	22:1	22:1	22:1	20:1	22:1	22:1	22:1	20:1
螺杆行程	SCREW STROKE	mm	630				630			
螺杆转速	SCREW SPEED	r.p.m	0-95				0-90			
注射速率	INJECTION RATE	cm ³ /sec	982	1152	1336	1534	982	1152	1336	1534
塑化能力	PLASTICIZING CAPACITY	g/sec	126	148	170	195	126	148	170	195
合模装置	CLAMPING UNIT									
锁模形式	TYPE OF CLAMPING UNITS	—	双曲肘				双曲肘			
锁模力	CLAMPING FORCE	tons	1600				1850			
锁模行程	MOULD CLAMPING STROKE	mm	1600				1650			
模板最大开距	MAX DAYLIGHT OPENING	mm	3100				3230			
容模量(最小-最大)	MOULD THICKNESS(MIN-MAX)	mm	700-1500				780-1580			
拉杆内距(WxH)	SPACE BETWEEN TIE BAR(WxH)	mm	1550x1430				1650x1500			
液压顶出力	HYDRAULIC EJECTION FORCE	tons	32				43			
顶出行程	HYDRAULIC EJECTION STROKE	mm	410				410			
其它	OTHERS									
系统压强	SYSTEM PRESSURE	Mpa	16				16			
油泵马达功率	PUMP DRIVING MOTOR	kw	142				142			
电热功率	HEATER CAPACITY	kw	92				92			
温度控制区	TEMPERATURE CONTROL ZONES	—	10				10			
油箱容积	TANK CAPACITY	L	1500				1500			
外形尺寸(长x宽x高)	MACHINE DIMENSION(LxWxH)	mm	14100x3400x2980				14700x3500x3100			
机器重量	MACHINE WEIGHT	tons	106				130			

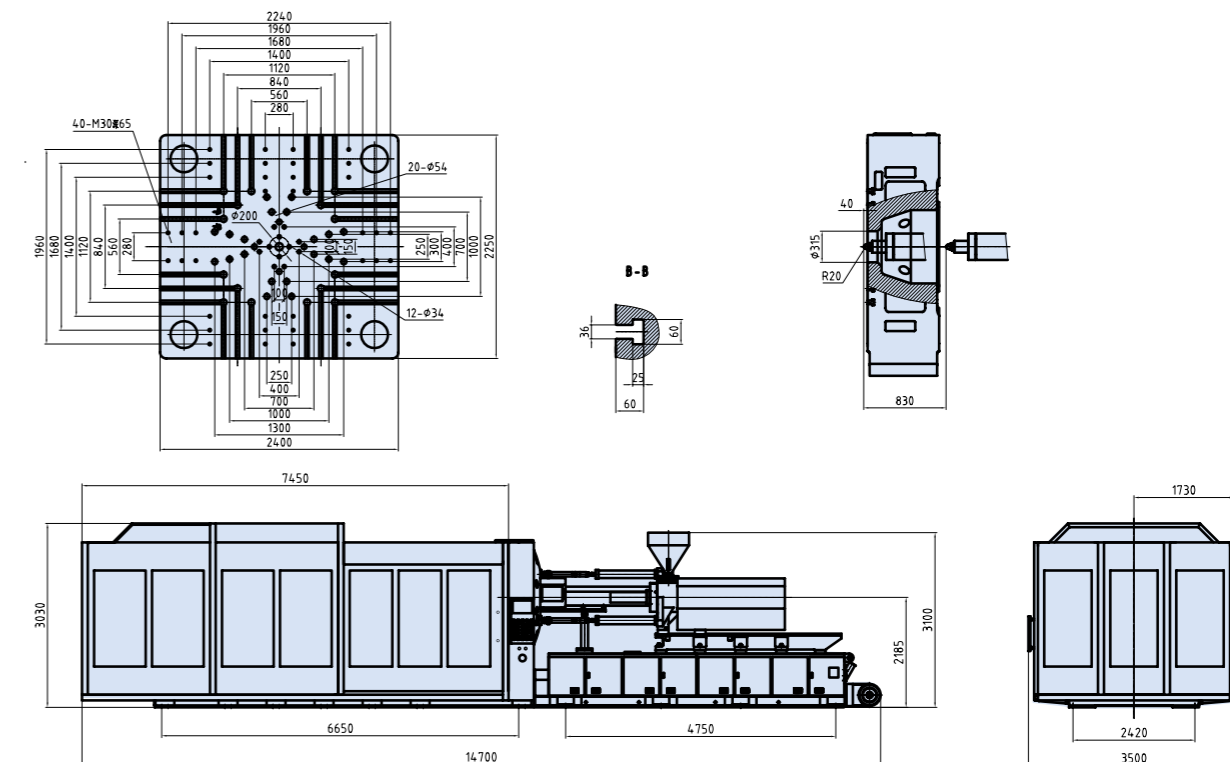
注：根据聚苯乙烯(P.S)比重1.05。由于技术不断发展，设计的改进及更新，以上规格如有更改，恕不另行通知。

Note: based on polystyrene at specific gravity of 1.05. Due to continuous improvements, we reserve the right to amend any aspect of the above specifications without prior notice.

FL 1600ES 模板图,机器外型图/Platen Dimension



FL 1850ES 模板图,机器外型图/Platen Dimension



LIGUANG Plastic Injection Molding Machine

LIGUANG



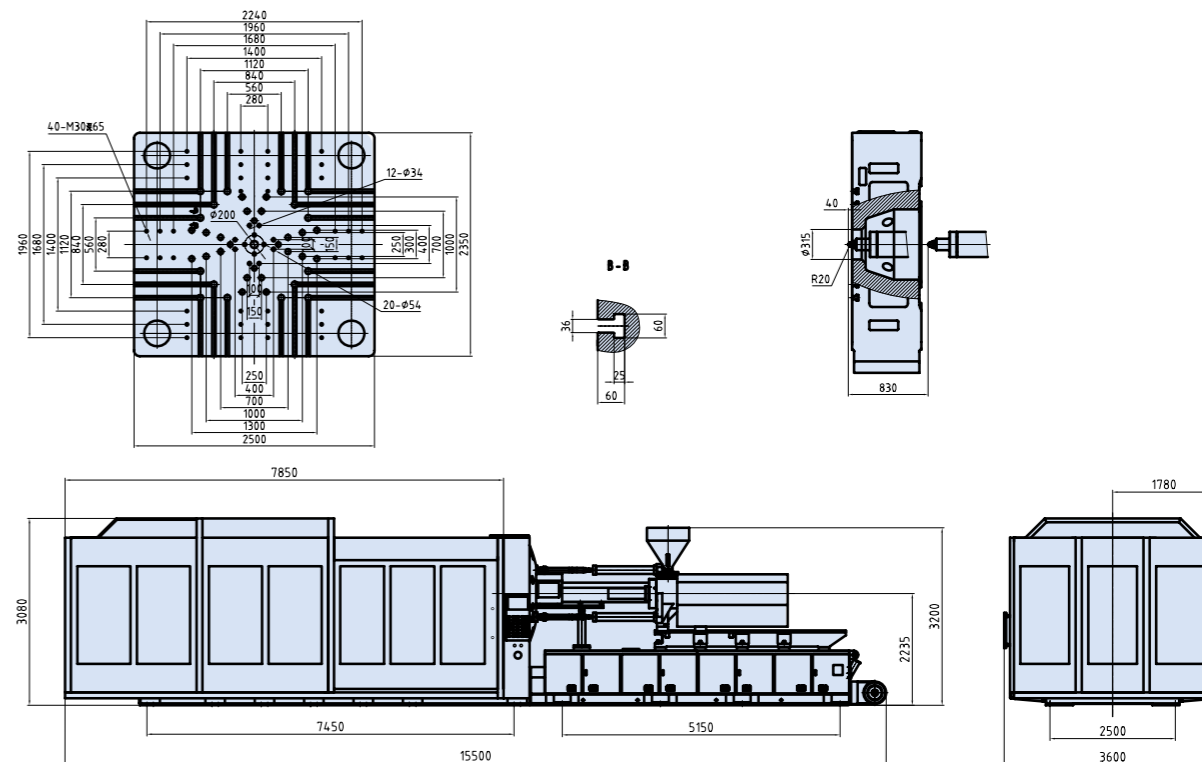
Technical Parameter

注射装置	INJECTION UNIT		FL 2100ES				FL 2400ES			
射台编号	SHOT UNIT	—	17077				25393			
螺杆编号	SCREW CODE	—	A	B	C	D	A	B	C	D
螺杆直径	SCREW DIAMETER	mm	130	140	150	160	150	160	170	180
注射压力	INJECTION PRESSURE	kgf/cm ²	1893	1632	1422	1250	1843	1620	1435	1280
每次注射量(硬胶)	SHOT WEIGHT(P.S)	g	8336	9668	11100	12630	12730	14484	16350	18330
		oz	294	341	392	446	449	511	577	647
螺杆长径比L:D	SCREW L:D	—	22:1	22:1	20:1	20:1	22:1	22:1	20:1	20:1
螺杆行程	SCREW STROKE	mm	680				780			
螺杆转速	SCREW SPEED	r.p.m	0-78				0-75			
注射速率	INJECTION RATE	cm ³ /sec	1155	1340	1538	1750	1402	1595	1801	2019
塑化能力	PLASTICIZING CAPACITY	g/sec	135	152	168	180	165	180	200	224
合模装置	CLAMPING UNIT									
锁模形式	TYPE OF CLAMPING UNITS	—	双曲肘				双曲肘			
锁模力	CLAMPING FORCE	tons	2100				2400			
锁模行程	MOULD CLAMPING STROKE	mm	1800				1900			
模板最大开距	MAX DAYLIGHT OPENING	mm	3500				3700			
容模量(最小-最大)	MOULD THICKNESS(MIN-MAX)	mm	800-1700				800-1800			
拉杆内距(WxH)	SPACE BETWEEN TIE BAR(WxH)	mm	1750x1600				1850x1700			
液压顶出力	HYDRAULIC EJECTION FORCE	tons	43				43			
顶出行程	HYDRAULIC EJECTION STROKE	mm	410				450			
其它	OTHERS									
系统压强	SYSTEM PRESSURE	Mpa	16				16			
油泵马达功率	PUMP DRIVING MOTOR	kw	165				195			
电热功率	HEATER CAPACITY	kw	112				160			
温度控制区	TEMPERATURE CONTROL ZONES	—	11				12			
油箱容积	TANK CAPACITY	L	1800				2500			
外形尺寸(长x宽x高)	MACHINE DIMENSION(LxWxH)	mm	15500x3600x3200				17000x3750x3500			
机器重量	MACHINE WEIGHT	tons	140				160			

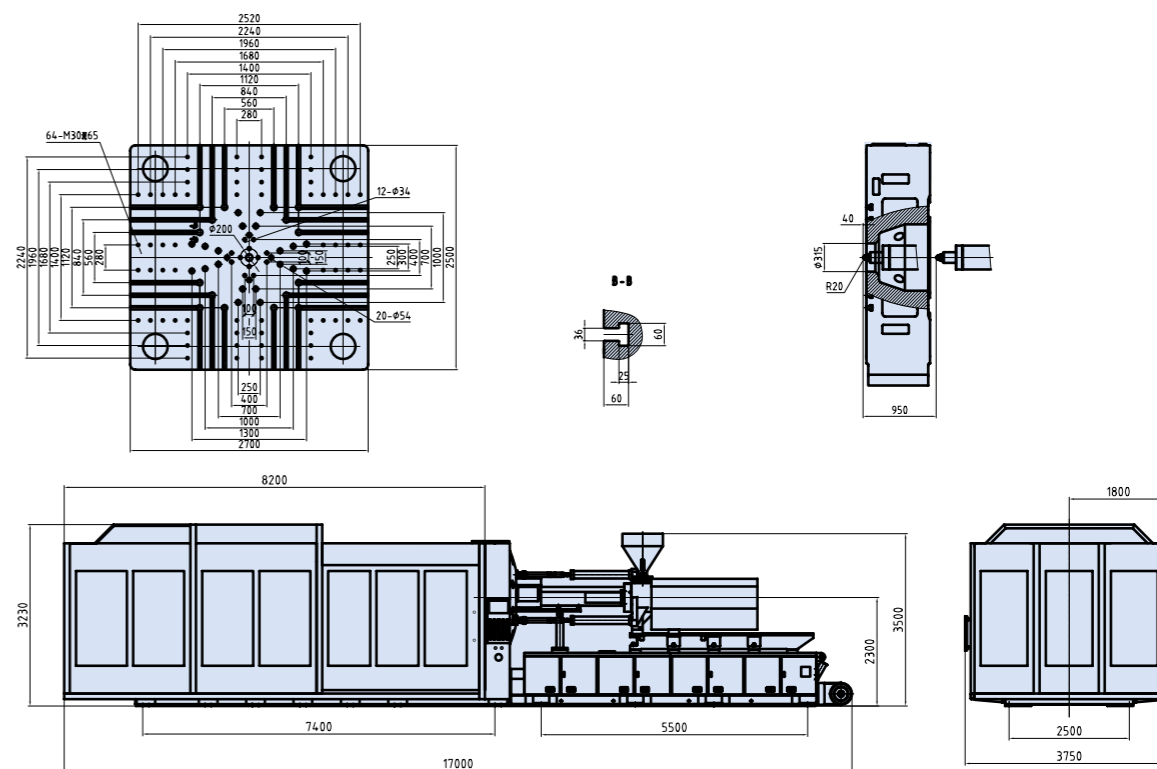
注: 根据聚苯乙烯(P.S)比重1.05。由于技术不断发展, 设计的改进及更新, 以上规格如有更改, 恕不另行通知。

Note: based on polystyrene at specific gravity of 1.05. Due to continuous improvements, we reserve the right to amend any aspect of the above specifications without prior notice.

FL 2100ES 模板图,机器外型图/Platen Dimension



FL 2400ES 模板图,机器外型图/Platen Dimension



LIGUANG Plastic Injection Molding Machine

LIGUANG



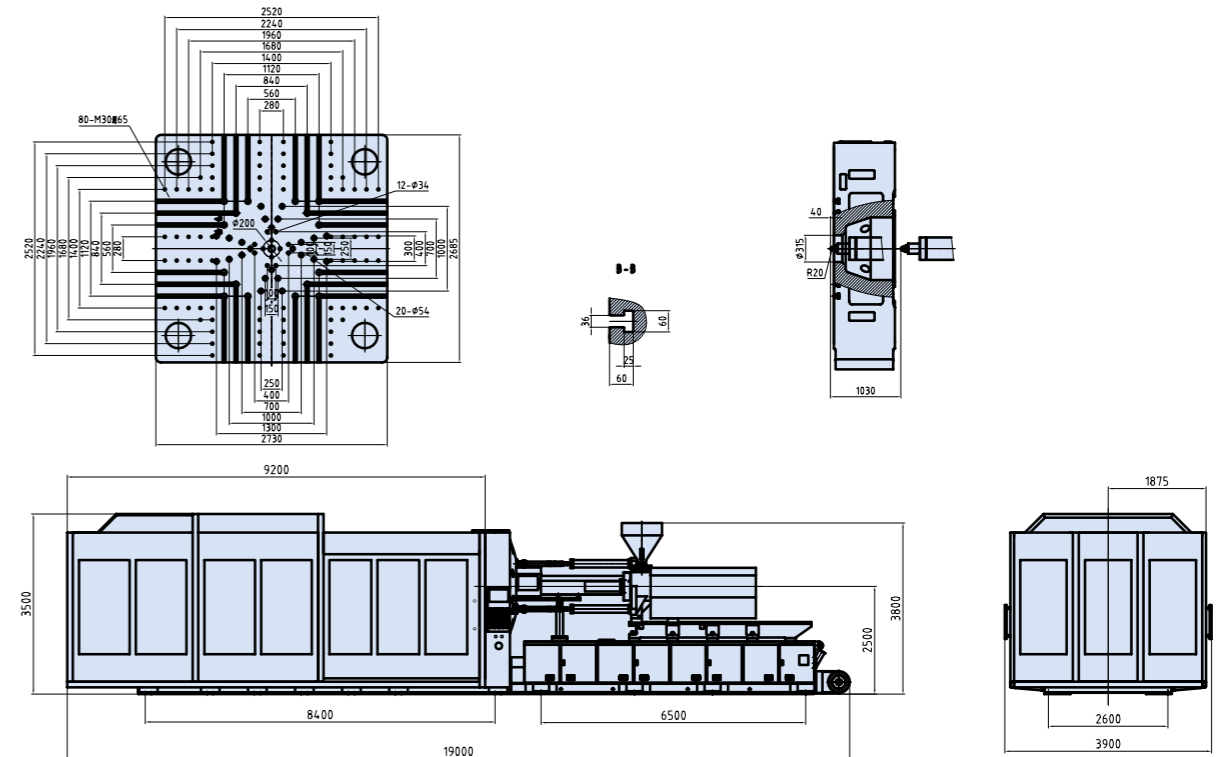
Technical Parameter

注射装置	INJECTION UNIT		FL 2800ES				FL 3300ES			
			35871		40092		40092		54967	
射台编号	SHOT UNIT	—	35871		40092		40092		54967	
螺杆编号	SCREW CODE	—	A	B	C	D	A	B	C	D
螺杆直径	SCREW DIAMETER	mm	170	180	190	200	190	200	210	220
注射压力	INJECTION PRESSURE	kgf/cm ²	1860	1659	1489	1344	1489	1344	1381	1258
每次注射量(硬胶)	SHOT WEIGHT(P.S)	g	17818	19976	24876	27563	24876	27563	36785	40372
		oz	629	705	878	972	878	972	1298	1424
螺杆长径比L:D	SCREW L:D	—	22:1	22:1	22:1	22:1	22:1	22:1	22:1	22:1
螺杆行程	SCREW STROKE	mm	850		950		950		1150	
螺杆转速	SCREW SPEED	r.p.m	0-70		0-60		0-60		0-50	
注射速率	INJECTION RATE	cm ³ /sec	1823	2044	2278	2524	2278	2524	2763	3033
塑化能力	PLASTICIZING CAPACITY	g/sec	188	210	230	260	230	260	220	260
合模装置	CLAMPING UNIT									
锁模形式	TYPE OF CLAMPING UNITS	—	双曲肘				双曲肘			
锁模力	CLAMPING FORCE	tons	2800				3300			
锁模行程	MOULD CLAMPING STROKE	mm	2000				2150			
模板最大开距	MAX DAYLIGHT OPENING	mm	3900				4050			
容模量(最小-最大)	MOULD THICKNESS(MIN-MAX)	mm	1000-1900				1000-1900			
拉杆内距(WxH)	SPACE BETWEEN TIE BAR(WxH)	mm	1900x1750				2160x1900			
液压顶出力	HYDRAULIC EJECTION FORCE	tons	43				55			
顶出行程	HYDRAULIC EJECTION STROKE	mm	450				550			
其它	OTHERS									
系统压强	SYSTEM PRESSURE	Mpa	16				16			
油泵马达功率	PUMP DRIVING MOTOR	kw	240				240		270	
电热功率	HEATER CAPACITY	kw	170		180		180		190	
温度控制区	TEMPERATURE CONTROL ZONES	—	12				12			
油箱容积	TANK CAPACITY	L	3200				3500			
外形尺寸(长x宽x高)	MACHINE DIMENSION(LxWxH)	mm	19000x3900x3800				21500x4500x4000			
机器重量	MACHINE WEIGHT	tons	200				260			

注: 根据聚苯乙烯(P.S)比重1.05。由于技术不断发展, 设计的改进及更新, 以上规格如有更改, 恕不另行通知。

Note: based on polystyrene at specific gravity of 1.05. Due to continuous improvements, we reserve the right to amend any aspect of the above specifications without prior notice.

FL 2800ES 模板图,机器外型图/Platen Dimension



FL 3300ES 模板图,机器外型图/Platen Dimension

