

electives purchasing functional unit



One head



Double mold heads



Threemold heads



Four mold heads



Six mold heads



Eight mold heads



Cooling cutter device



Cooling molding device



Wild-mouth bottle trimming device



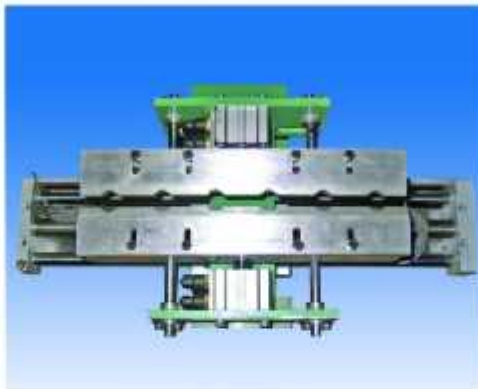
Stand-alone Wild-mouth bottle trimming machine



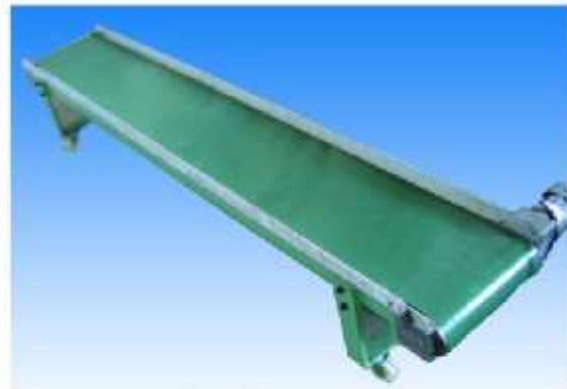
Blow Mold



Blow Mold



Take Bottle AUTO Rebalarm



Horizontal conveyor belt

HONGKONG DEKEWEI MACHINERY GROUP
DONGGUAN JINJUN MACHINERY CO.,LTD

23 years of experience, the automatic hollow blow molding leader



Product Introduction

we offer the high-speed intelligent blow molding machine trimming leak packaged intergrated automatic production line

HONGKONG DEKEWEI MACHINERY GROUP DONGGUAN JINJUN MACHINERY CO.,LTD

Add.No. 799 Tianraobe Industry District, Hengli Town,
Dongguan City, Guangdong Province China
Tel: 86-769-82801938 82801968 82801988
Fax: 86-769-82208383
86-769-82901611 13926660651

yw@superjinjun.com
sales1@superjinjun.com
sales2@superjinjun.com
sales3@superjinjun.com
sales8@superjinjun.com



Company Introduction

Certificate

HongKong DeKeWei Machinery Group is a professional manufacturer who dedicate itself to research & develop, produce and sells full-automatic microcomputer plastic hollow extrusion blow moulding machine range from 10ML-200L and plastic machinery auxiliary equipment, its subordinates brand "superjinjun" plastic hollow extrusion blow moulding machine enterprise was set up in December, 1999, named as DongGuan JinJun Machinery Co., Ltd.

The company's factory is located nearby Jing - Canton - Kowloon Railway (DongGuan Station), the plant floor area is 20000 square meter, possess large quantities of automatic processing equipment, For example: CNC numerical control turning-lathe, horizontal type CNC processing center, imported inner outer round grinding machine, automatic sheet metal coating production line, etc., we are capable to provide more than 300 units of blow molding machine production line annually.

The founder has been engaged in this field for 20 years, work together with consultant company of the same trade from EURO&US on technology collaboration, production innovation long-term basis, introduced the latest advanced analysis system of extrusion screw and die head design from European plastic industry since 2006, keeping up with the world's most advanced technology, at present we own an elite team of 100 persons, among them more than 20 persons are senior management and engineer, carry out strict management, implement quality control system approved by ISO9001 and overall prompt pre-sales, after-sales service system, product application: cosmetic container, lubricant bottle, chemical, pharmaceutical, food, drink, milk industry packaging and the first choice of processing equipment for plastic hollow parts of furniture, automobile, motor, etc.

Possess nearly 1000 users and more than 2000 units of successful cases are running day and night over the world, "SUPER" product start being exported to more than 20 countries since 2002: Vietnam, Malaysia, Indonesia, Philippines, South Africa, Brasil, Venezuela, Peru, Kenya, Switzerland, England, Australia, USA, Mexico, Russia, Cuba, Egypt, etc, we warmly welcome friends from everywhere in the world.



The application of laminated plastic blowing molding technology is the magic tool for promoting the core competitiveness and profits of bottle maker

Electricity circuit system **Allen-Bradley** **SIEMENS**

We adopt American Allen-Bradley patent professional blowing machine control system and PLC component, with various functions like: module designing and modifying, center-monitor system, diagnoses through long-distance web, multiple data groups communication, intelligent temperature control center, auto-alarming and failure feedback, auto-recover for operation, anti-cooling automatic screw self-protection, multi-normal parameter memory, auto-record for yield and circle time, and screen language switch for Chinese, English, Espanol, etc.



Oil circulation system **VICKERS** **MOOG** **YUKEN**

We adopted the oil circulation system from America. It has the fine oil pump, valve, circulation board and a unique filter system all of which resulted in a faster speed, stability in speed reducing, low noise, energy conservation and long duration.



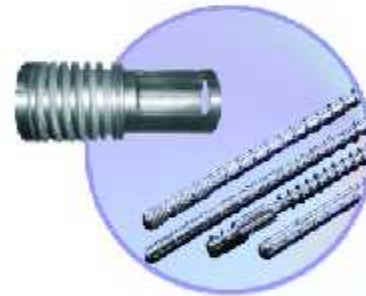
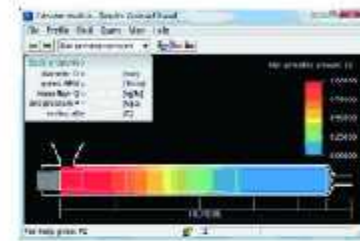
Airing circulation system **FESTO** **SMC** **AIRTAC** **Rexroth** Bosch Group

Thanks to our experience for many years in this field and the expertise suppliers of FESTO and SMC and AIRTAC from Germany and Japan and TAIWAN, we adopt and produce a series of high quality & reliable air-circulation system including the blowing technology, clearance airing and airing drying system to our machines.



Injection system

- A. We have introduced a set of sophisticated plastic ejection, analog and data analysis system, which carries out real-time supervision and monitoring in accordance with plastic material type at different process sections (feeding, plasticization and blending), and adjusts the screw parameter design, temperature & rotation speed. The purpose is to achieve the best injection result for different models of plastic.
- B. It is made by a Taiwan-based professional manufacturer, using Japan-processed special-purpose steel, with advanced CNC equipment to ensure high precision and long durability.
- C. Advantages: 1. 40% more than traditional design in injection output.
2. Even-distributed injection amount, ensuring that each piece of product has stable weight and small tolerance.
3. Even plasticization, stable and well-distributed color.



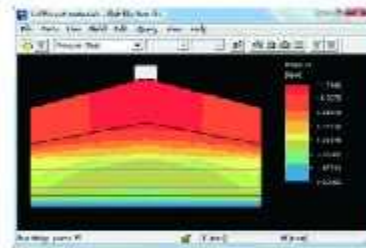
CLAMPING STRUCTURE

This design can install different thickness moulds, mould open-close stroke is easy to adjust, and the use the finite element method being stress analysis. Mould movement is use famous brand over loading grade guide strip, control by proportion hydraulic pressure value, focus on lubricate system, to make mould-movement much more swift and steady, make sure machine high output capacity. Stable construction and mould-close oil tank are place on the midmost, makes mould force more equality, and make the product mouth more perfect, and the mould life can be extend, between the machine and mould there is wide space, easy to install material crusher recycle system.



Die (extrusion nozzle)

- A. We have introduced an analysis system for plastic moulding from the USA and Europe. State-of-the-art design and accurate analog-analyzing system enable us to solve every problem in plastic moulding of different materials.
- B. The moulding device is made of specially-treated steel from Japan. It is processed by Japan-made CNC machine before surface-polishing and hardening process. High-precision assembly can greatly extend the service life of the moulds.
- C. Advantages: The injected base product is even in thickness, normal color and luster. It can process several layers of material at the same time.



吹風系統 BLOW SYSTEM

Introduce into Europe design idea, it's tightness and durable, can be adjusted outside the safe door, can be choosed adjustable angle slant blow function if request.



Scrap automatic recycle system

According to different plastic container, we have abundant experience of removing scrap, able to meet the user's requirement of full-automatic production to achieve a no personnel operation, the removed plastic scrap being crushed immediately, new and old material are feeding at the ratio to be used again to achieve the environmental protection effect of no secondary pollution.



Product output device

Use a precise robot take out the bottle and put onto the conveyer



CLAMPING STRUCTURE (ELECTIVE)

In accordance with the needs of blow molding machine, to control and output pressure and flow rate, it can output as much as a blow molding process need. The energy-efficiency will be more remarkable in the state of packing pressure and cooling. Normally, the electro-hydraulic servo system saves energy over 50% more than constant speed vane pump system and over 20% than variable displacement piston pump system.



Lubrication System

Adjustable from control panel central Automatic lubrication pump with low-level oil alarm provide less maintenance required. In addition to its interval and time of lubrication options, our lubrication system give much more smooth production.



We Produce Blow Moulding Machines in accordance with each customer's requirements.

Blow Moulding Machine for medicine bottle

Blow Moulding Machine for Food jars

Blow Moulding Machine for cosmetic containers

Blow Moulding Machine for detergent bottles

Blow Moulding Machine for lubricant containers

Blow Moulding Machine for Christmas gifts.

Blow Moulding Machine for milk bottles.

PVC bottles Blow Moulding Machine

PU sale Blow Moulding Machine

PETG bottles Blow Moulding Machine

In-mold labeling bottles labeling machine

10 25L Barrel Blow moulding Machine

Moulding machine for toolkit box



PE



PA



S5000



PP



PVC



EVA



PC



K



PETG



PS



TPU



EVOH/PE/PP

SPB-L · 1.8L (Series)

Double Station



PETG厚底瓶
PETG Thick Bottom Bottle



This style is Jinjun's smallest blow moulding machine. Its character is small size, high speed, stable and energy-saving. It can match the auto bottle mouth deflashing device, rotary bottle mouth cutting device, conveyor belt and automatic crusher system. Single mould head, double mould heads, three mould heads, four mould heads and six mould heads to be selected. The daily output (24 hours) reaches approximately from 20,000 to 120,000; it can produce from 0.01 to 1.8L plastic hollow products.

SPB-2.5L (Series)



Double Station



This style is man-machine interface, easy to operate. Double station and single station, from single mould head to six mould head, single layer to six layers, multi layer with transparent line. It can match in-mold labeling, auto-deflashing device, crusher recycle system. The daily output (24 hours) can reach approximately from 12,000 to 86,000; it can produce from 0.1-2.5L plastic hollow products.



SPB-5L (Series)



Double Station

This style is man-machine interface, easy to operate. Double station and single station, from single mould head to six mould head, single layer to six layers, multi layer with transparent line. It can match in-mold labeling, auto-deflashing device, crusher recycle system. The daily output(24 hours) can reach approximately from 5,000 to 86,000; it can produce from 0.2-5L plastic hollow products.

In Mold Labelling Robot



The machine accumulates nearly 10 years' bottle blow molding experience, it is the industrial renovation combination of blow molding technology and modern times printing technology, to make produce combined with plastic (bottle) container and ad paper stick in one time, its advantages as: 1. Resist pirate product 2. The ad paper could not fade even it is placed in humidity environment. 3. Appear photo effect after direct printing, improve the grade of packing products. 4. Reduce production procedure, save costs and space. It is an ideal choice for packing sector like cosmetic, foodstuff and machine oil.

Leak detector



The machine can link a variety of blow molding machines, refinement design: standard type, high precision type, from single, double to ten-station, rigorously check the hollow product's quality. It is precise, stable and easy operation, a necessary quality control tool for bottle blow molding factory.

Wide-mouth bottle trimming machine



The wide-mouth bottle trimming machine is our mini equipment developed aiming at wide-mouth bottle produced by customer, it can separate the scrap from the finished container by being installed in line with blow molding machine, and can be used independently too. Normally applicable for round containers with neck diameter range from 20mm to 350mm.

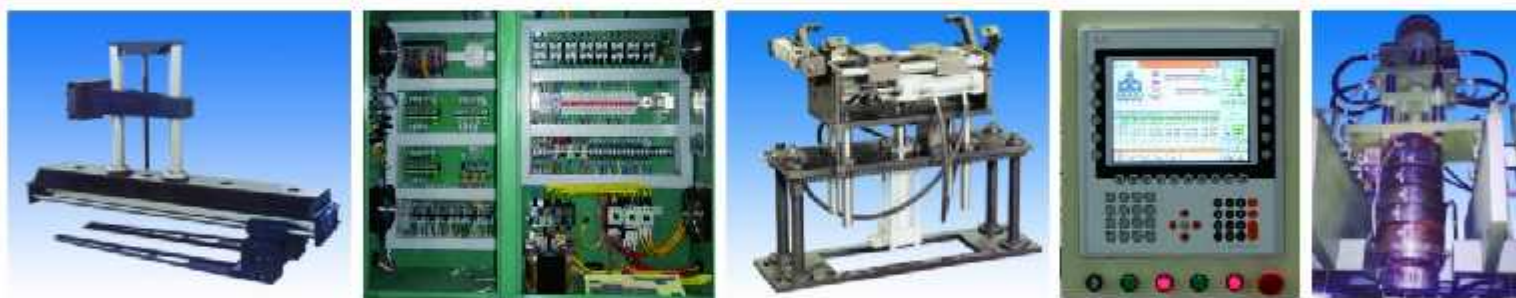
PETG

PETG BOTTLE MACHINE





Large storage blow moulding (bottle blowing) Machine can produce 20-120L volume, it is human and machine interface, the operation is easy, stable and quick color change. 30 points and 100 points embryo thickness controller can be selected, the storage plastic head can store 4-8kg plastic, the plastic embryo can be extruded immediately, the thin and thick are even, machine hand can be fixed up.



Parameters

Specifications		SPB-20LJSGE series	SPB-30LJSGE series	SPB-50LJSGE series	SPB-120LJSGE series
Material		PE, PP, ABS...	PE, PP, ABS...	PE, PP, ABS...	PE, PP, ABS...
Max container capacity	L	20	30	50	120
Output (dry cycle)	Pc/hr	620	600	450	360
Machine Dimension (LxWxH)	M	4.1X2.3X3.6	4.7X2.6X4	5.7X2.6X4	6.2X2.8X4.5
Total weight	T	8	12	13	14

Extruder unit

Screw diameter	Mm	75	80	90	100
Screw L/D ratio	L/D	26:1	26:1	28:1	28:1
Melting capacity(HDPE)	Kg/hr	120	140	160	190
Number of heating zone	zone	4	4	5	6
Extruder heating power	Kw	16	16	20	24
Extruder driving power	Kw	30	37	45	50

Accumulator head

Number of heating zone	Zone	4	5	6	7
Power of die heating	KW	10.4	13	15.6	18.2
Max die-pin diameter	mm	250	300	350	450
Accumulator capacity	L	5	5	6.6	12
Overall Dimension(LxWxH)	M	1.9X0.65X0.62	2.15X0.9X0.55	2.15X0.9X0.55	2.45X1.0X0.64

Clamping

Clamping force	KN	176	200	300	360
Platen opening stroke	mm	250-700	400-900	450-1050	350-1200
platen size	mm	720X800	880X800	880X950	1020X1060
Max mould size(WxH)	mm	440X550	600X1000	720X1200	780X1260
Mould thickness	mm	250-350	450-510	460-600	510-700

Clamping Unit

Hydraulic pump motor(KW)	KW	18.5	22	30	37
Fan power for screw	KW	0.68	0.98	0.88	1.1
Air pressure	Mpa	0.6-1	0.6-1	0.6-1	0.6-1
Air consumption	m ³ /min	0.6	0.8	0.8	0.8
Cooling water consumption	L/min	60	65	80	100
Total power	KW	75.56	88.88	111.4	135.3
Average energy consumption	KW	34	40	50	67

Note: When users plan blow special products, please inform. Under normal circumstances improve the technical parameters with no prior notice.

Parameters

Specifications		SPB-120LJSGE series SPB-180LJSGE series	SPB-160LJSGE series SPB-190LJSGE series	SPB-230LJSGE series SPB-290LJSGE series	SPB-300LJSGE series SPB-360LJSGE series
Material		PE, PP, ABS...	PE, PP, ABS...	PE, PP, ...	PE, PP, ...
Max container capacity	L	120	160	230	300
Output (dry cycle)	Pc/hr	360	300	180	160
Machine Dimension (LxWxH)	M	6.0X3.3X5.0	7.5X3.5X5.7	9.5X4.1X6.5	10X4.2X6.8
Total weight	T	19	22	36	46

Extruder unit

Screw diameter	Mm	100	120	120	130
Screw L/D ratio	L/D	26:1	30:1	30:1	30:1
Melting capacity(HDPE)	Kg/hr	180-200	230-300	320-400	450
Number of heating zone	zone	6	7	8	8
Extruder heating power	Kw	24	28	39	45
Extruder driving power	Kw	55	75-90	110	120

Accumulator head

Number of heating zone	Zone	7	8	10	12
Power of die heating	KW	18.2	20.8	38	45
Max die-pin diameter	mm	450	500	500	600
Accumulator capacity	L	12	20	22	25
Overall Dimension(LxWxH)	M	2.45X1.0X0.64	2.7X1.1X0.7		

Clamping Unit

Clamping force	KN	440-880	680-1360	880	1500
Platen opening stroke	mm	600-1400	700-1500	880-1700	900-1800
platen size	mm	1100X1100	1100X1400	1200X1600	1400X1750
Max mould size(WxH)	mm	900X1400	1100X1600	1100X1900	1200X2050
Mould thickness	mm	610-750	610-750	900-960	1000-1100

Clamping Unit

Hydraulic pump motor	KW	37	37/45	45+22+5.5	55+22+5.5
Fan power for screw	KW	1.1	1.32	0.25x6	0.25x6
Air pressure	Mpa	0.8	1	1	1
Air consumption	m ³ /min	0.8	1	3	4
Cooling water consumption	L/min	150	180	210	230
Total power	KW	135.5	170.12	259.5	280.5
Average energy consumption	KW	81	102	160	165

Note: When users plan blow special products, please inform. Under normal circumstances improve the technical parameters with no prior notice.

Principal Specifications

Single station: SPB-1J, Single, double layer, wave strip line (single station) series of full-auto extrusion power precision hollow plastic pipe molding machine specifications (parameter form)

Model		SPB-1J1J5 (One Head)	SPB-1J2J5 (Two Heads)	SPB-1J3J5 (Double layer One Head)	SPB-1J4J5 (Two heads double layer)
Screw diameter	mm	65	65	65-35	65-35
Screw L/D ratio	L/D	26:1	26:1	26:1/24:1	26:1/24:1
Extrusion motor	kw	22	22	22+5.5	22+5.5
Oil pressure motor	kw	7.5/11	7.5/11	7.5/11	7.5/11
Screw rotating speed	r.p.m	10-85	10-85	10-85	10-35
Heating points	zone	6	6	8	10
Heating capacity	kw	7.2	9.6	9.6	12
Extruding capacity per hour: HDPE/PP	kg/h	65	85	85/25	85/25
PE/PA/PC	kg/h	60	80	-	-
Extruding mold mouth outer diameter	mm	180	100	180	100
Mold center distance	mm	-	180	-	180
Mold stroke	mm	180-550	180-550	180-550	180-550
Length of mold capacity	mm	150-430	150-430	150-430	150-430
Mold width	mm	200-410	200-410	200-410	200-410
Thickness of the mold capacity	mm	180-230	180-230	180-230	180-230
Dry cycle per hour	t/m/h	900	900	500	900
Mold locked pressure	ton	7	7	7	7
Oil tank capacity	L	180	180	180	180
Pressure of air	kg/cm ²	6-8	6-8	6-8	6-8
Air consumption	m ³ /min	0.7	0.7	0.7	0.7
Cooling water pressure	Mpa	0.3-0.5	0.3-0.5	0.3-0.5	0.3-0.5
Cooling water consumption	L/min	50	50	50	50
Min./Max diameter of product	mm	60-250	50-160	60-250	50-160
Weight of product	g	40-500	20-250	40-500	20-250
Product capacity	L	5.0	2.5	5.0	2.5
Total power consumption	kw	40.2	42.6	59.1	50.6
Average power consumption	kw	22.1	23.4	26.4	27.0
Machine net weight	ton	5	5	5	5
Machine gross weight	ton	5.5	5.5	5.5	5.5
Machine dimension(L*W*H)	m	3.2x1.7x2.8	3.2x1.7x2.8	3.2x1.9x2.0	3.2x1.9x2.8
Box dimension	m ³	17.2	17.2	19.1	19.1

Figures and data in this catalogue are subject to change without notice due to constant research and development.

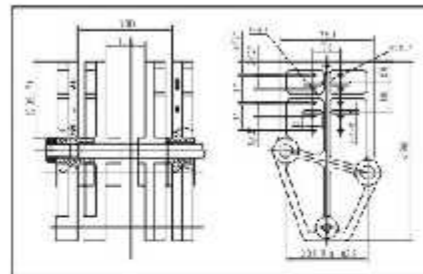
The remarks: SPB: XL: Specifications 1J: One Head 2J: Two head 3J: Three head 4J: Four head 6J: Six head 8J: Eight head U: Double-deck head X: Us: in head V: PVC PC: PETG head S: Single Station U: Double Station

Double station: SPB-2J, Single, double layer, wave strip line (double station) series of full-auto extrusion power precision hollow plastic pipe molding machine specifications (parameter form)

SPB-2J1J2J (One Head)	SPB-2J2J2J (Two Heads)	SPB-2J3J2J (Three Heads)	SPB-2J4J2J (Four Heads)	SPB-2J6J2J (Six Heads)	SPB-2J1J2J2J (Double layer One Head)	SPB-2J2J2J2J (Double layer Two Heads)	SPB-2J1J2J2J2J (Large head Double layer Two Heads)
70	70	70	70	70	70-45	70-45	70/45/70
26:1	26:1	26:1	26:1	26:1	25:1/24:1	25:1/24:1	26:1/26:1/26:1
30	30	30	30	30	30+5.5	30+5.5	30+7.5+1.1
11/15	11/15	11/15	11/15	11/15	11/15	11/15	11/15
10-85	10-85	10-85	10-85	10-85	10-85	10-85	10-85
6	8	10	12	14	8	10	7
7.2	9.5	12	14.4	16.8	9.5	12	15.4
105	105	105	105	105	105/25	105/25	25/8
65	65	-	-	-	-	-	-
180	120	80	60	45	180	120	180
-	180	120	90	60	-	180	-
180-550	180-550	180-50	180-550	180-550	180-550	180-550	180-550
150-430	150-430	150-430	150-430	150-430	150-430	150-430	150-430
200-410	200-410	200-410	200-410	200-410	200-410	200-410	200-410
180-230	180-230	180-230	180-230	180-230	180-230	180-230	180-230
900x2	900x2	900x2	900x2	900x2	900x2	900x2	900x2
7	7	7	7	7	7	7	7
180	180	180	180	180	180	180	180
6-8	6-8	6-8	6-8	6-8	6-8	6-8	6-8
0.8	0.8	0.8	0.8	0.8	0.8	0.8	0.8
0.3-0.5	0.3-0.5	0.3-0.5	0.3-0.5	0.3-0.5	0.3-0.5	0.3-0.5	0.3-0.5
50	60	60	60	60	60	60	60
50-250	50-160	50-100	50-80	40-50	60-250	50-160	50-250
40-500	40-250	40-180	40-150	40-80	40-600	40-250	40-500
5.0	2.5	1.5	1.0	0.4	5.0	2.5	5.0
48.2	54.6	57	69.4	61.8	60.1	62.6	68.9
28.7	30	31.3	32.6	40	33	34.3	37
7.0	7.0	7.0	7.0	7.0	7.0	7.5	7.5
7.5	7.5	7.5	7.5	6	8	8	8
3.1x2.3x2.1	3.1x2.3x2.1	3.1x2.3x2.1	3.1x2.3x2.1	3.1x2.3x2.1	3.1x2.3x2.1	3.1x2.3x2.1	3.1x2.3x2.1
34	34	34	34	34	34	34	34

SPB superior quality set parameter is unanimously.

SPB-1/1.8LD



Template Size Chart

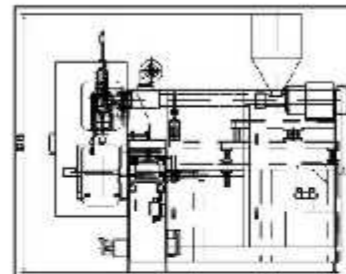


Figure dimensions

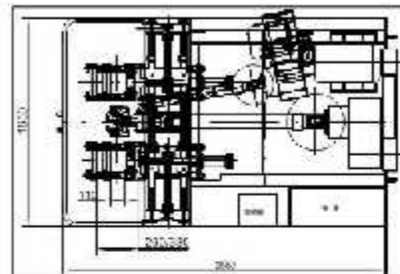
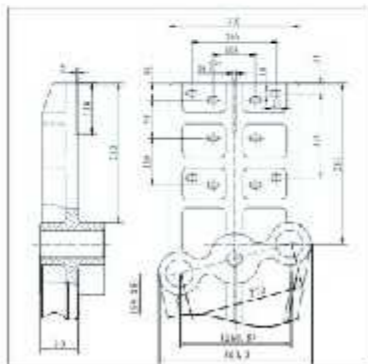


Figure dimensions

SPB-2.5LD



Template Size Chart

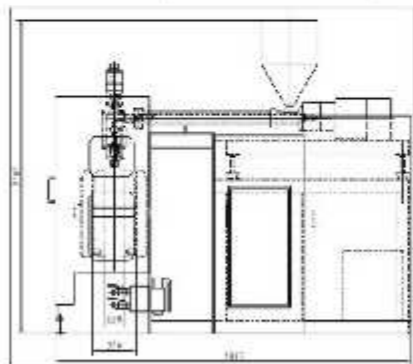


Figure dimensions

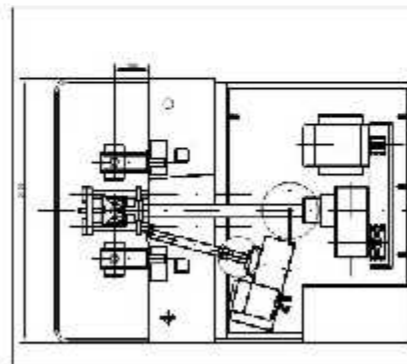
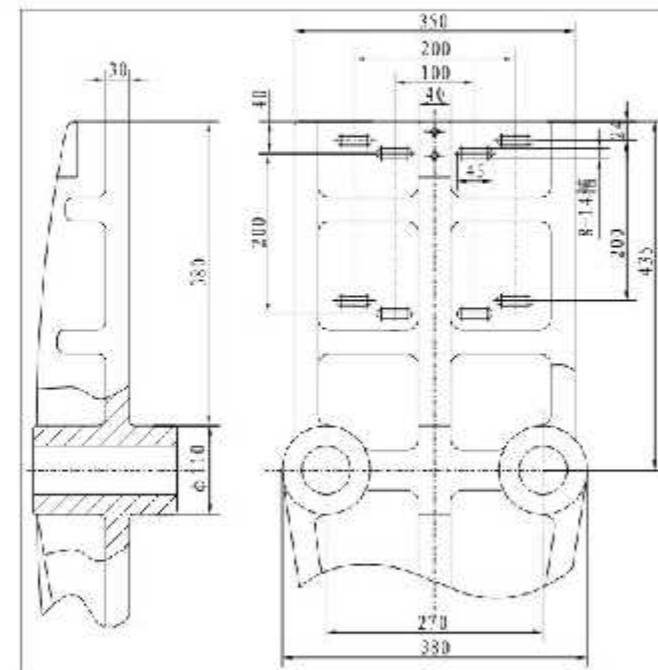


Figure dimensions

SPB-5LD



Template Size Chart

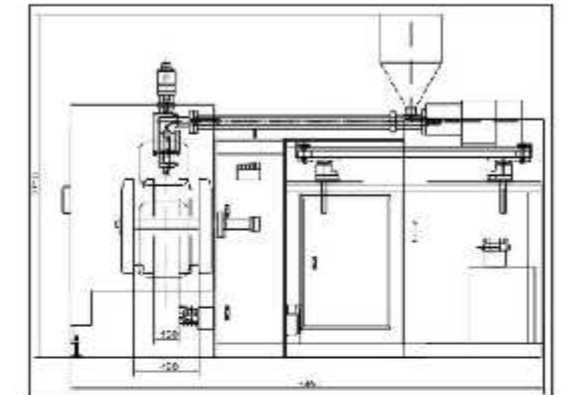


Figure dimensions

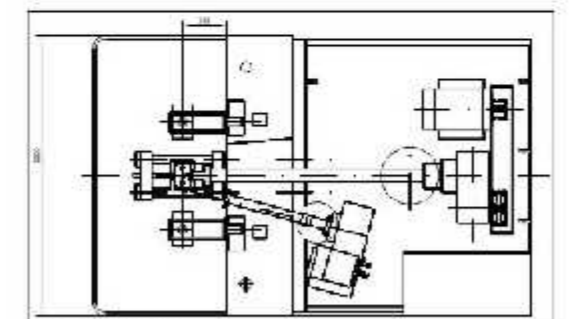


Figure dimensions

DKB Series

Servo drive energy-saving plastic blow molding machine

MACHINE INTRODUCTION

DKB series Fully automatic single-multi layers blow molding machine production line.

This style accumulates over a dozen years' blow moulding machine manufacturing experience, utilize implementation of advanced design analysis system to extrude multi-layer plastic materials from system. Die molding process of computer simulation and experiments of technology innovation, is an unique, the most mature, stable and the highest output machine in the country. The machine is man-machine interface that is easily operated, single station and double station, from single mould head to four mould heads, single layer to six layers, multi-layer with liquid level line, in-mould labelling, automatic defaishing device or rotating neck finishing device, and automatic crusher recycle system, automatically remove excess material, high efficiency, stable and energy-saving. In line with the modern factory needs, the daily output (24 hours) can produce reaches approximately 3,000 to 60,000; single layer, double layers suitable for PE, PP, PETG material containers. And also can using for producing TPU sole material product.

- single layer, double layers suitable for PE, PP, PETG material containers. And also can using for producing TPU sole material product.
- suitable for the production of functional obstruct 3-6 layers composite containers for various capacity (such as PE, PP, MR, EVOH, etc.), widely used in chemical industry, high-end cosmetic bottles, food industry, vehicles (fuel tanks), etc.
- the 6-layers machine can achieve the production of 3-layers composite containers with special design; and the 5-layers machine can achieve the production of 4-layer or 3-layers composite containers with special design.



Food (multi-layer)

Technical points of multilayer high obstructing bottle:

The multilayer and high obstructing bottle is one of the high-tech synthesis products. It takes high density polyethylene as basal layer, high quality synthesizing polymer which is best performing at obstructing organic impregnant as inner layer, and adhesive coating as mid layer. It can get rid of disadvantages of single layer HDPE bottles, such as, easy to leak when it comes to take organic solvent, easy to distortion, of PET bottles, easy to leak, not able to resist the DMF and high temperature etc. It belongs to the latest packing bottles like, foodstuff bottle, medicine, chemical, pesticide bottles.

1. Accord with the American FDA and European EEC standard, available to take the food directly.
2. Able to keep obstructing oxygen under a high humidity condition.
3. With a neutral scent, no influence to packed stuff.
4. Fragrance can keep it even after a period of long time.
5. Excellent shine on the bottle's surface.
6. Absolutely obstructing the ultraviolet radiation under nano-300.
7. Well done in resisting scrape.
8. Good at obstructing oxygen, oil and resin.
8. Extend shelf life to 12 months.

Use range:

- Personal care product**: fruit juice, milk, and catchup, meat, dairy products packing container
- Food**: fruit juice, milk, and catchup packing container
- Medicine**: medicine packing container
- Pesticide**: insecticide, herbicide, etc. and non dangerous chemical industry product pack container.
- Thermostable product**: Each kind of pipeline and vessel



Lubricants



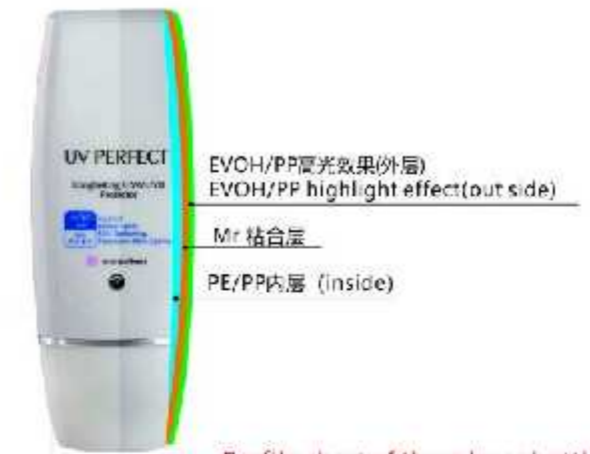
Chemical products (multi-layer)



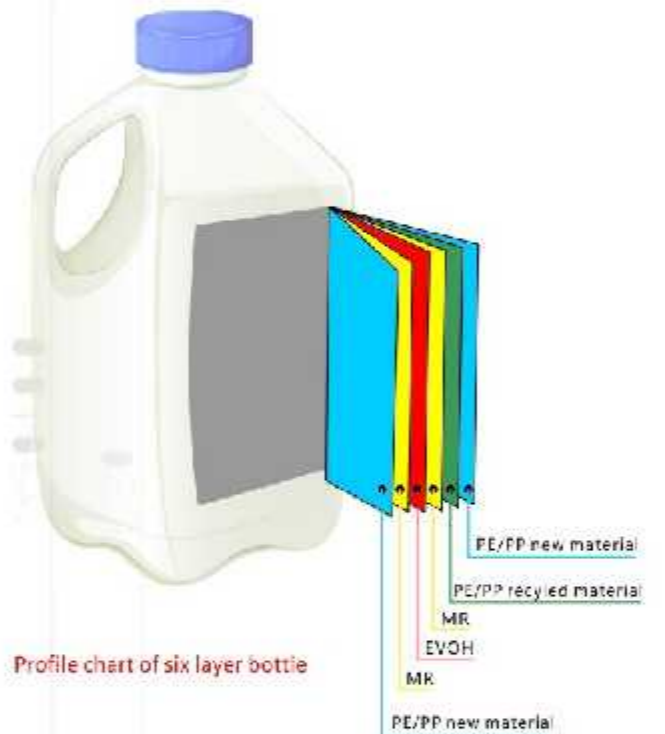
Personal care (multi-layer)



Personal care (PETG)



Profile chart of three layer bottle



Profile chart of six layer bottle

High-speed DKB- 2.5L



- 1.double station, single head to four head
- 2.mold center distance:double 130-150mm,three 90mm, four 75mm, six 60mm
- 3.Single layer to six layer, can match transparency line
- 4.Daily output capacity (24 hours) can reach 3,000-60,000pcs
- 5.can make 0.1-2.5L plastic bottle products

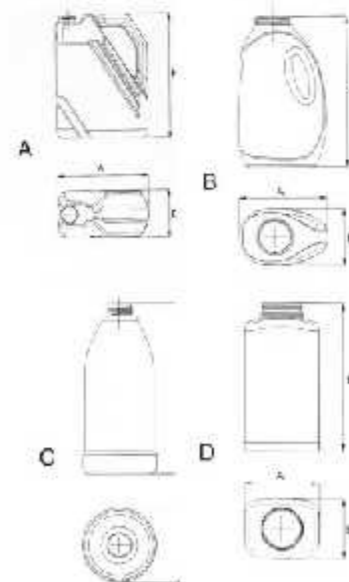
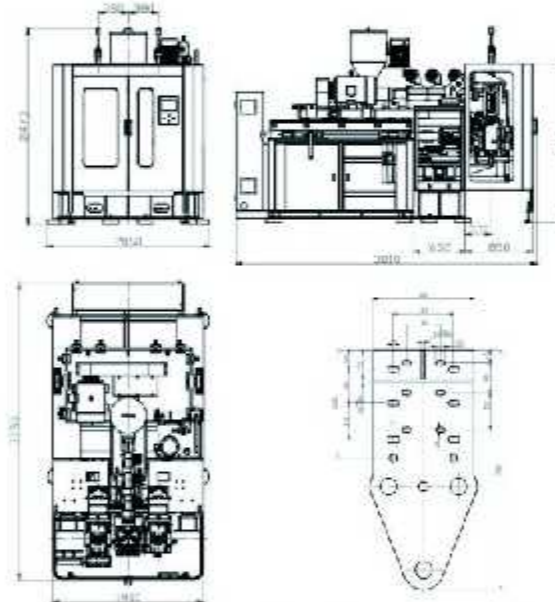
DKB-2.5L

Parameters:

Screw diameter: 55mm ϕ
 Screw L/D ratio: 25:1
 (50HZ) Screw RPM (50Hz) : 10-80 r/min
 (PE) Extrusion capacity per hour(PE) : 55kg/h
 Number of heaters: 4
 Opening stroke: 380mm
 Clamping stroke: 150-450mm
 (160Bar) Mold clamping force (160Bar) : 7T
 Dry cycle time : 3.4s
 Wall-thickness Parison control: 100 μ m
 Cooling water consumption: 0.4m³/min(0.3Mpa, 18°C)
 Compressed air consumption: 1.5m³/min(0.8Mpa)
 Machine net weight : 6T
 (L*W*H) Machine dimension:3800X1900X2500(mm)

POWER CONSUMPTION:

Inverter motor: 15 KW
 (PE) Screw heating capacity(PE) : 10 KW
 Hydraulic motor: 11 KW
 Die- head heating zone power: 5 KW
 Maximum Electrical power rating : 44 KW



DKB-2.5L										
Double die-head			center distance: 130/150							
A			B			C		D		
A	B	H	A	B	H	ϕ	H	A	H	
110	120	280	110	120	280	120	280	110	280	
Three die-head			center distance: 90							
A			B			C		D		
A	B	H	A	B	H	ϕ	H	A	H	
80	120	280	90	120	280	80	280	80	280	
Four die-head			center distance: 75							
A			B			C		D		
A	B	H	A	B	H	ϕ	H	A	H	
65	120	280	65	120	280	65	280	65	280	
Six die-head			center distance: 60							
A			B			C		D		
A	B	H	A	B	H	ϕ	H	A	H	
50	120	280	60	120	280	50	280	60	280	

High-speed DKB- 5L



- 1.double station, single head to four head
- 2.mold center distance:double 150-180mm,three 120mm, four 100mm, six 80mm
- 3.Single layer to six layer, can match transparency line
- 4.Daily output capacity (24 hours) can reach 3,000-60,000pcs
- 5.can make 0.1-5L plastic bottle products

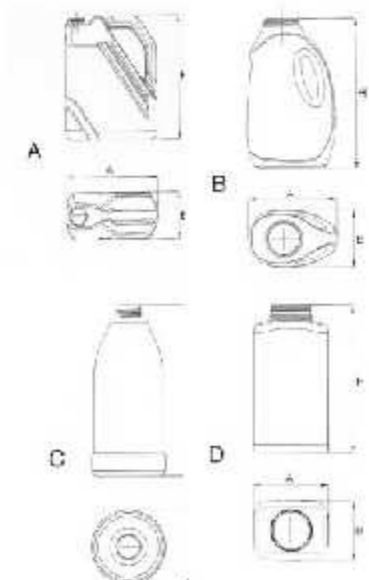
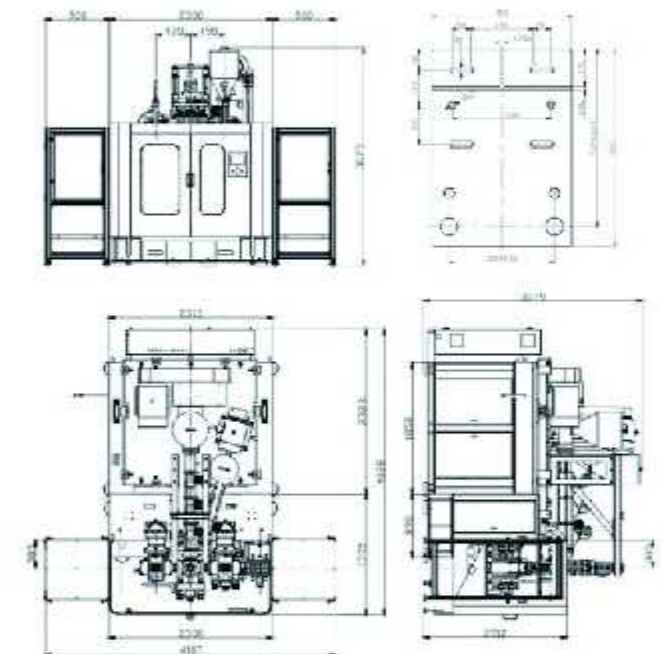
DKB-5L

Parameters:

Screw diameter: 70mm ϕ
 Screw L/D ratio: 25:1
 (50HZ) Screw RPM (50Hz) : 10-80 r/min
 (PE) Extrusion capacity per hour(PE) : 90kg/h
 Number of heaters: 4
 Opening stroke: 490mm
 Clamping stroke: 180-550mm
 (160Bar) Mold clamping force (160Bar) : 10T
 Dry cycle time : 4.2s
 Wall-thickness Parison control: 100 μ m
 Cooling water consumption: 0.8m³/min(0.3Mpa, 18°C)
 Compressed air consumption: 2.0m³/min(0.8Mpa)
 Machine net weight : 10T
 (L*W*H) Machine dimension:4100X2300X3100(mm)

POWER CONSUMPTION:

Inverter motor: 30 KW
 (PE) Screw heating capacity(PE) : 17 KW
 Hydraulic motor: 15KW
 Die- head heating zone power: 8 KW
 Maximum Electrical power rating : 67 KW



DKB-5L										
Double die-head			center distance: 180							
A			B			C		D		
A	B	H	A	B	H	ϕ	H	A	H	
160	140	280	160	140	280	140	280	160	280	
Three die-head			center distance: 120							
A			B			C		D		
A	B	H	A	B	H	ϕ	H	A	H	
100	140	280	100	140	280	100	280	100	280	
Four die-head			center distance: 100							
A			B			C		D		
A	B	H	A	B	H	ϕ	H	A	H	
80	140	280	80	140	280	80	280	80	280	
Six die-head			center distance: 80							
A			B			C		D		
A	B	H	A	B	H	ϕ	H	A	H	
70	140	280	70	140	280	70	280	70	280	

High-speed DKB- 8L

- 1.double station, single head to six head
- 2.mold center distance:double 220-250mm,three 150mm,four 120mm,six 80mm
- 3.Single layer to six layer, can match transparence line
- 4.Daily output capacity (24 hours) can reach 12,000-100,000pcs
- 5.can make 0.3-8L plastic bottle products



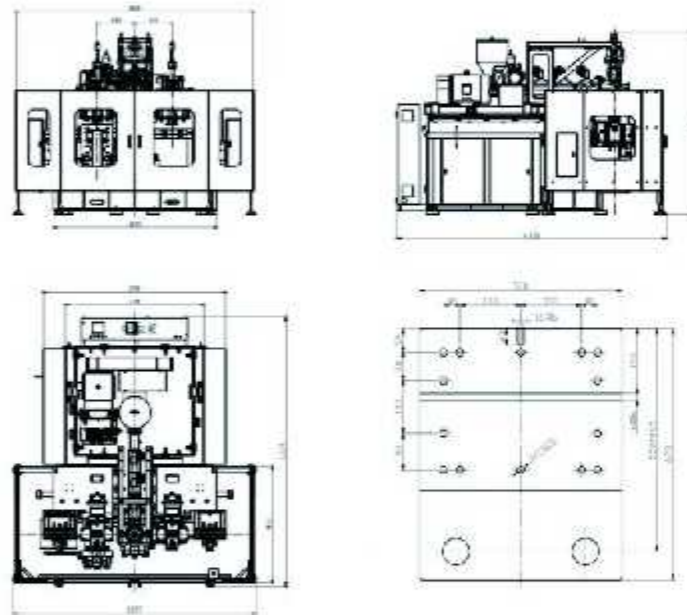
DKB-8L

Parameters:

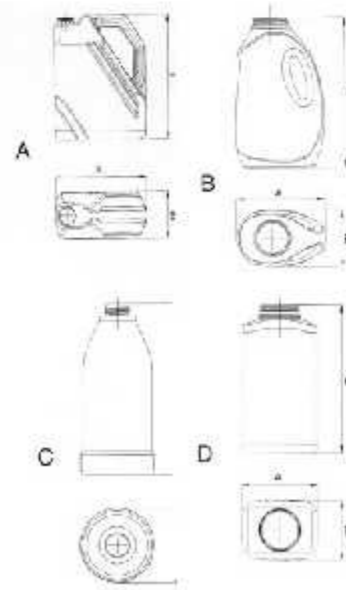
Screw diameter: 80mm ϕ
 Screw L/D ratio: 30:1
 (50HZ) Screw RPM (50Hz): 10-75 r/min
 (PE) Extrusion capacity per hour(PE): 120kg/h
 Number of heaters: 5
 Opening stroke: 600mm/640mm
 Clamping stroke: 180-550mm
 (160Bar) Mold clamping force (160Bar): 15T
 Dry cycle time: 4.9s
 Wall-thickness Parison control: 100dpi
 Cooling water consumption: 0.6m³/min(0.3Mpa, 18°C)
 Compressed air consumption: 2.8m³/min(0.8Mpa)
 Machine net weight: 12T
 (L*W*H) Machine dimension: 4320X3900X2900(mm)

POWER CONSUMPTION:

Inverter motor: 45KW
 (PE) Screw heating capacity(PE): 23 KW
 Hydraulic motor: 22+4 KW
 Die-head heating zone power: 10 KW
 Maximum Electrical power rating: 86.2 KW



DKB-8L										
Double die-head			center distance: 250							
A B H			A B H			C H		A D		
220	150	330	200	150	330	150	330	220	330	
Three die-head			center distance: 150							
A B H			A B H			C H		A D		
130	150	330	130	150	330	130	330	130	330	
Four die-head			center distance: 120							
A B H			A B H			C H		A D		
100	150	330	100	150	330	100	330	100	330	
Six die-head			center distance: 80							
A B H			A B H			C H		A D		
70	150	330	70	150	330	70	330	70	330	



High-speed DKB- 10L

- 1.double station, single head to six head
- 2.mold center distance:double 280mm,three 150mm,four 120mm,six 80mm
- 3.Single layer to six layer, can match transparence line
- 4.Daily output capacity (24 hours) can reach 300-100,000pcs
- 5.can make 5-10L plastic hollow products



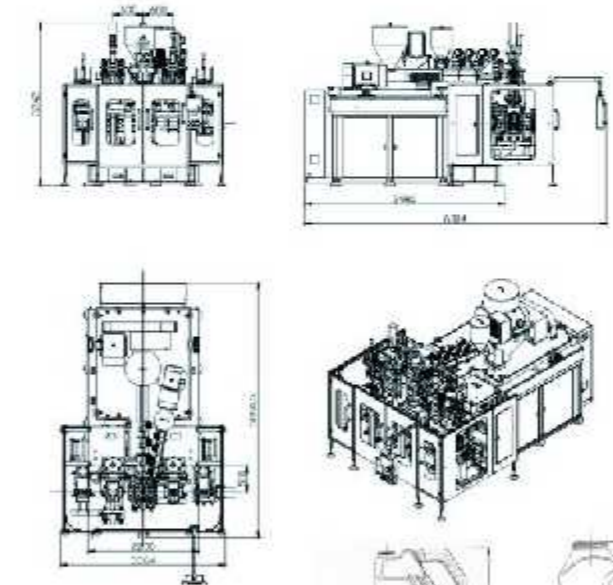
DKB-10L

Parameters:

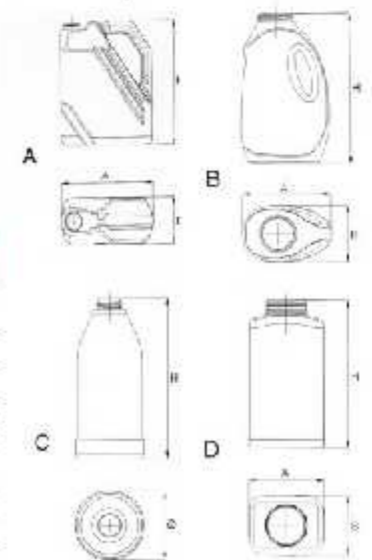
Screw diameter: ϕ 80mm
 Screw L/D ratio: 30:1
 (50HZ) Screw RPM (50Hz): 10-75 r/min
 (PE) Extrusion capacity per hour(PE): 120kg/h
 Number of heaters: 5
 Opening stroke: 640mm/700mm
 Clamping stroke: 240-700mm
 (160Bar) Mold clamping force (160Bar): 17T
 Dry cycle time: 6s
 Wall-thickness Parison control: 100dpi
 Cooling water consumption: 0.6m³/min(0.3Mpa, 18°C)
 Compressed air consumption: 2.8m³/min(0.8Mpa)
 Machine net weight: 13T
 (L*W*H) Machine dimension: 5100X3300X3300(mm)

POWER CONSUMPTION:

Inverter motor: 45 KW
 (PE) Screw heating capacity(PE): 23 KW
 Hydraulic motor: 22KW
 Die-head heating zone power: 12 KW
 Maximum Electrical power rating: 82 KW



DKB-10L										
Double die-head			center distance: 280							
A B H			A B H			C H		A D		
250	260	350	250	260	350	250	380	260	350	
Three die-head			center distance: 180							
A B H			A B H			C H		A D		
160	260	350	160	250	350	260	350	260	350	



High-speed DKB- 18L



- 1.double station, single head to six head
- 2.mold center distance:double 250-280mm,three 150mm,four 120mm,six 80mm
- 3.Single layer to six layer, can match transperance line
- 4.Daily output capacity (24 hours) can reach 300-100,00pcs
- 5.can make 5-18L plastic hollow products

- 1.double station, single head
- 2.Daily output capacity (24 hours) can reach 20,000-40,000pcs
- 3.can make half and full hand TPU plastic hollow products



High-speed DKB- 6TD(65)/8TD(75)

Parameters:

Screw diameter: $\phi 65/\phi 75$ mm
 Screw L/D ratio: 28:1
 (50HZ) Screw RPM (50Hz) : 10-80 r/min
 (TPU) Extrusion capacity per hour(TPU) : 70kg(65)/100kg/h(75)
 Number of heaters: 4
 Opening stoke: 490mm
 Clamping stoke: 180-550mm
 (160Bar) Mold clamping force (160Bar) : 8T
 Dry cycle time : 4s
 Cooling water consumption: $0.6\text{m}^3/\text{min}(0.3-0.5\text{Mpa}, 18^\circ\text{C})$
 Compressed air consumption: $0.8\text{m}^3/\text{min}(6-8\text{kg}/\text{cm}^2)$
 Machine net weight : 8T(65)/9T(75)
 (L*W*H) Machine demansion: 3600X2800X3000(mm)

POWER CONSUMPTION:

Inverter motor: 22KW(65)/37KW(75)
 Screw heating capacity: 17.2 KW
 Hydraulic motor: 15KW
 Die- head heating zone power: 8 KW
 Maximum Electrical power rating : 62.2KW(65)/77.2KW(75)

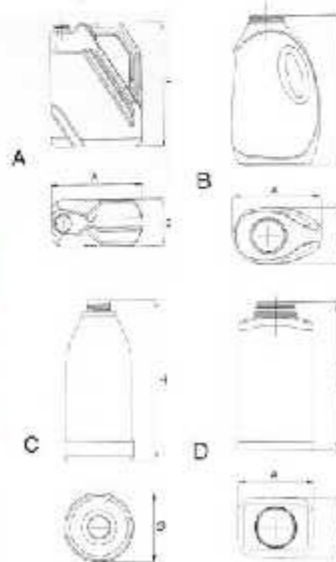
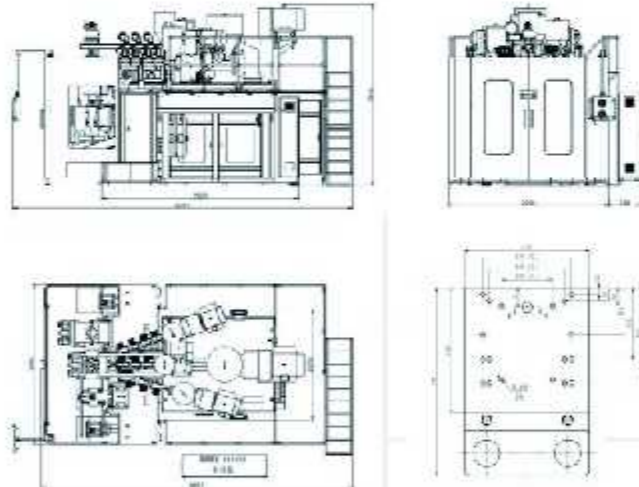
DKB-18L

Parameters:

Screw diameter: $\phi 90$ mm
 Screw L/D ratio: 30:1
 (50HZ) Screw RPM (50Hz) : 10-75 r/min
 (PE) Extrusion capacity per hour(PE) : 120kg/h
 Number of heaters: 5
 Opening stoke: 640mm
 Clamping stoke: 300-700mm
 (160Bar) Mold clamping force (160Bar) : 20T
 Dry cycle time : 6s
 Wall-thickness Parison control: 100dpi
 Cooling water consumption: $0.6\text{m}^3/\text{min}(0.3\text{Mpa}, 18^\circ\text{C})$
 Compressed air consumption: $2.0\text{m}^3/\text{min}(0.8\text{Mpa})$
 Machine net weight : 15T
 (L*W*H) Machine demansion: 5200X4140X3820(mm)

POWER CONSUMPTION:

Inverter motor: 55 KW
 (PE) Screw heating capacity(PE) : 27 KW
 Hydraulic motor: 30KW
 Die- head heating zone power: 12 KW
 Maximum Electrical power rating : 109 KW



DKB-18L

Double die-head center distance: 280



A			B			C		D	
A	B	H	A	B	H	ϕ	H	A	H
250	260	350	250	260	350	250	350	260	350

Three die-head center distance: 180



A			B			C		D	
A	B	H	A	B	H	ϕ	H	A	H
160	260	350	160	260	350	250	350	260	350



Blow Molding Machine for TPU Sole Material

HONGKONG DEKEWEI MACHINERY GROUP has been dedicated in research and develop automation plastic hollow extrusion blow molding machine for more than ten years, the model DKW speediness series is the group's Second Generation new product which possess multi term patents. we have always uphold the idea of "innovative market as guidance", aiming at all kinds of industries and combined with optimize suggestion from many customers, therefore developed the applied new model which has excellent performance of high output, energy conservation, environmental protection, stabilization, automaticity high, multi head and multi layers. Especially applicable to the mass production of plastic container for many industries like cosmetic, detergent, lubricant oil, medicine, food, drink and so on.



High-speed DKW-10TD

- 1.double station, single head to six head
- 2.mold center distance:double 180mm,three 120mm,four 100mm,six 60mm
- 3.Single layer to six layer, can match transparence line
- 4.Daily output capacity (24 hours) can reach 12,000-86,000pcs
- 5.can make 0.3-5L plastic hollow products

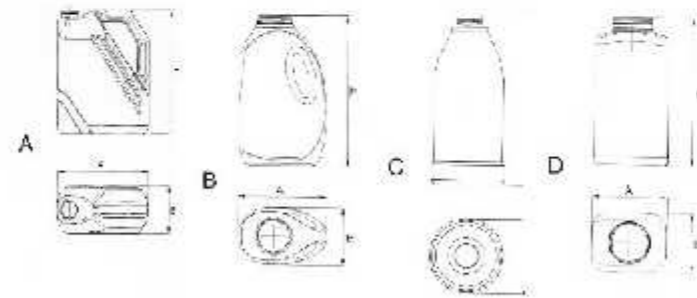
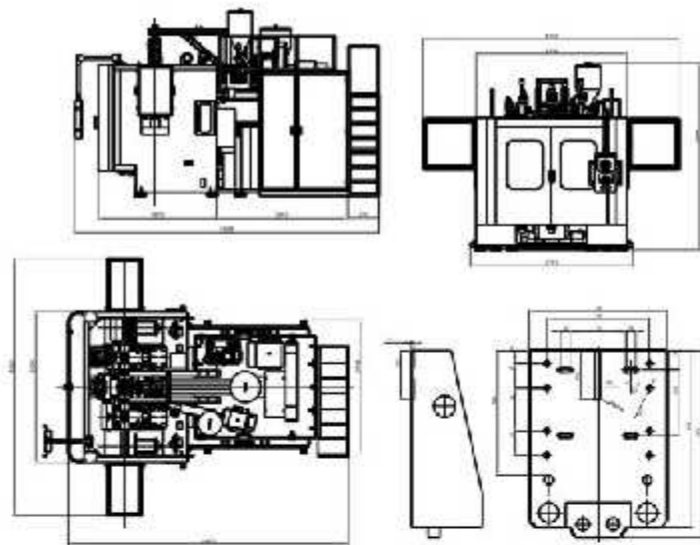
Parameters:

Screw diameter: $\varnothing 70\text{mm}$
 Screw L/D ratio: 26:1
 (50HZ) Screw RPM (50Hz): 10-80 r/min
 (PE) Extrusion capacity per hour(PE): 100kg/h
 Number of heaters: 4
 Opening stroke: 530mm
 Clamping stroke: 180-550mm
 (160Bar) Mold clamping force (160Bar): 10T
 Dry cycle time: 3.4s
 Wall-thickness Parison control: 100-300點
 Cooling water consumption: $0.6\text{m}^3/\text{min}(0.3\text{Mpa}, 18^\circ\text{C})$
 Compressed air consumption: $2.0\text{m}^3/\text{min}(0.8\text{Mpa})$
 Machine net weight: 12T
 (L*W*H) Machine demension: 5100X2700X3100(mm)

POWER CONSUMPTION:

Inverter motor: 30 KW
 (PE) Screw heating capacity(PE): 14 KW
 Hydraulic motor: 18.5KW+2.2KW
 Die- head heating zone power: 8 KW
 Maximum Electrical power rating: 72.7 KW

DKW-10TD									
Double die-head center distance: 180-220									
A		B		H		C		D	
160	150	330	160	150	300	150	300	150	300
Three die-head center distance: 120-140									
100	150	300	100	150	300	125	300	120	300
Four die-head center distance: 100									
90	150	300	90	150	300	95	300	90	300
Six die-head center distance: 60									
45	150	300	45	150	300	70	300	45	300



High-speed DKW-15TD

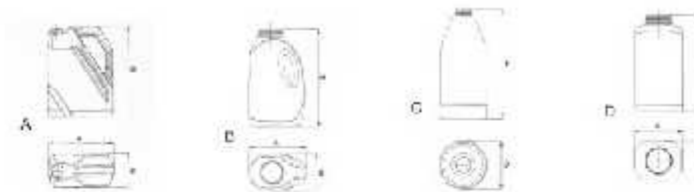
- 1.double station, single head to eight head
- 2.mold center distance:double 220mm,three 140mm,four 120mm, six 80mm,eight 60mm
- 3.single layer to six layer, can match transparence line
- 4.daily output capacity (24 hours) can reach 15,000-100,000pcs
- 5.can make 0.4-8L plastic hollow products

Parameters:

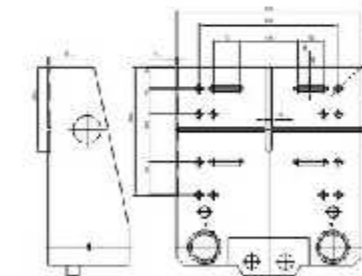
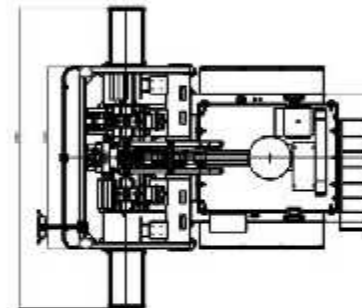
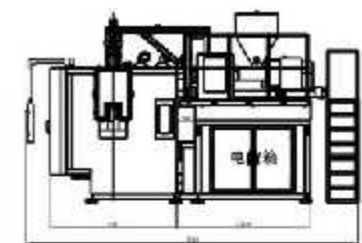
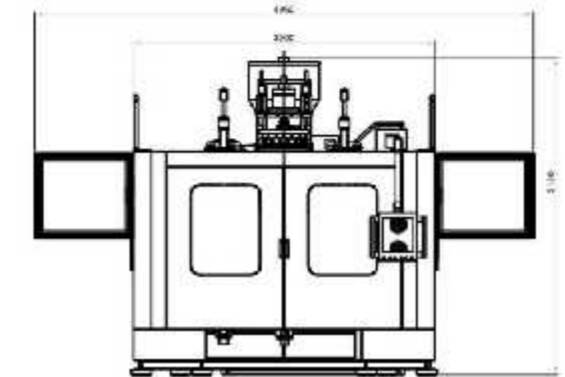
Screw diameter: $\varnothing 80\text{mm}$
 Screw L/D ratio: 28:1
 (50HZ) Screw RPM (50Hz): 10-75 r/min
 (PE) Extrusion capacity per hour(PE): 120kg/h
 Number of heaters: 5
 Opening stroke: 600mm/700mm
 Clamping stroke: 180-550mm
 (160Bar) Mold clamping force (160Bar): 15T
 Dry cycle time: 3.9s
 Wall-thickness Parison control: 100-300dpi
 Cooling water consumption: $0.6\text{m}^3/\text{min}(0.3\text{Mpa}, 18^\circ\text{C})$
 Compressed air consumption: $2.0\text{m}^3/\text{min}(0.8\text{Mpa})$
 Machine net weight: 15T
 (L*W*H) Machine demension: 5480X3000X3160(mm)

POWER CONSUMPTION:

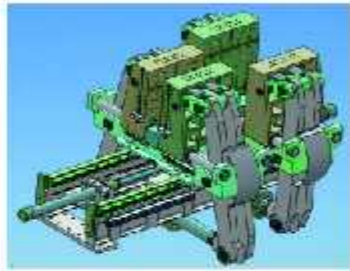
Inverter motor: 37 KW
 (PE) Screw heating capacity(PE): 17.2 KW
 Hydraulic motor: 22KW+2.2KW
 Die- head heating zone power: 12 KW
 Maximum Electrical power rating: 90.4 KW



DKW-15TD									
Double die-head center distance: 250									
A		B		H		C		D	
220	150	330	200	150	300	150	300	150	300
Three die-head center distance: 120									
120	150	300	120	150	300	125	300	120	300
Four die-head center distance: 100									
100	150	300	90	150	300	95	300	90	300
Six die-head center distance: 80									
65	150	330	65	150	330	70	330	65	330
Six die-head center distance: 60									
45	150	330	45	150	330	50	330	45	330



High-speed DKW-20TD



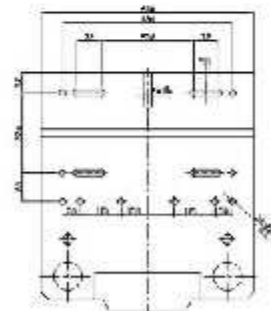
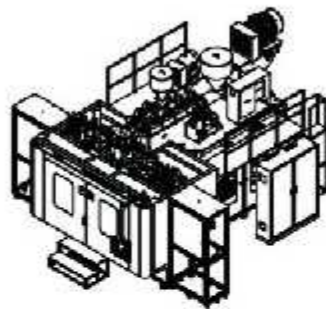
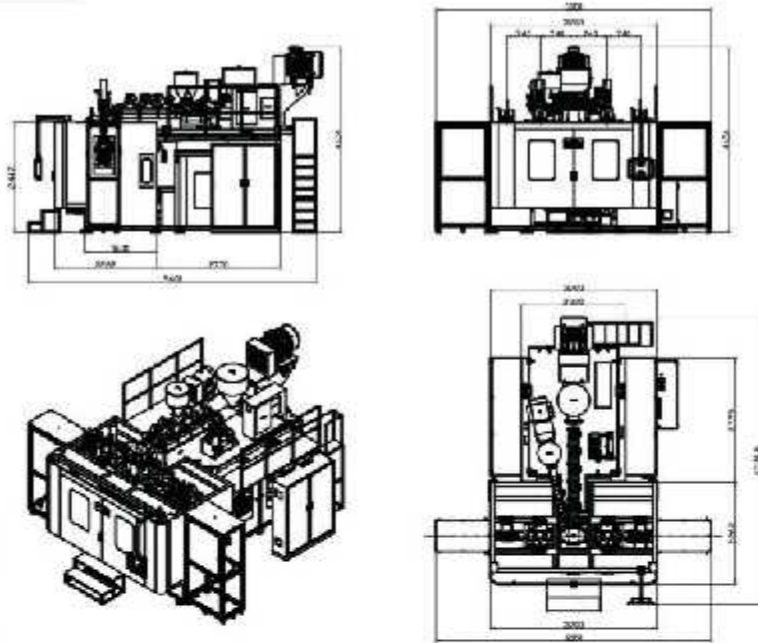
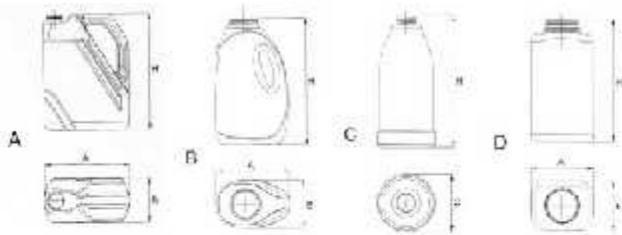
hyperbolic arm clamping structure

- 1.double station, single head to eight head
2.mold center distance:double 280mm,three 190mm,four 140mm,
six 100mm, eight 80mm
- 2.single layer to six layer, can match transparence line
- 3.daily output capacity (24 hours) can reach 10,000-100,000pcs
- 4.can make 0.4-10L plastic hollow products



Parameters:
Screw diameter, $\phi 100\text{mm}$
Screw L/D ratio, 30:1
(50HZ) Screw RPM (50Hz) : 10-75 r/min
(PE) Extrusion capacity per hour(PE) : 220-260kg/h
Number of heaters : 6
Opening stroke, 740mm
Clamping stroke, 180-550mm
(160Bar) Mold clamping force (160Bar) : 25T
Dry cycle time : 4.9s
Wall-thickness Parison control, 100-300dpi
Cooling water consumption, $0.6\text{m}^3/\text{min}(0.3\text{Mpa}, 18^\circ\text{C})$
Compressed air consumption, $2.8\text{m}^3/\text{min}(0.8\text{Mpa})$
Machine net weight : 22T
(L*W*H) Machine dimension, 6380X3700X4200(mm)

POWER CONSUMPTION:
Inverter motor, 75 KW
(PE) Screw heating capacity(PE) : 32 KW
Hydraulic motor, 30+4 KW
Die-head heating zone power, 22 KW
Maximum Electrical power rating : 163 KW



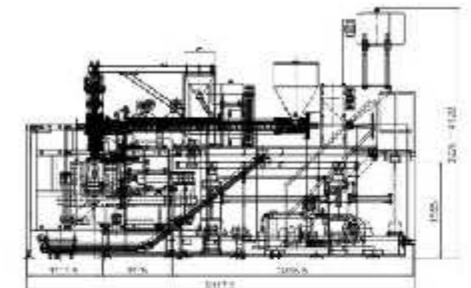
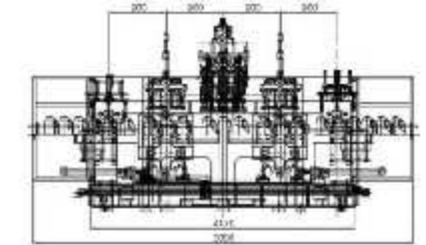
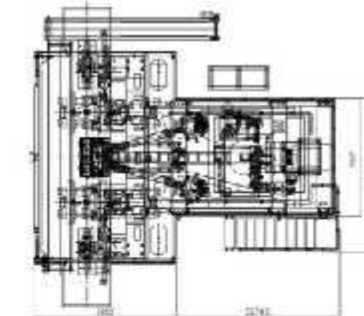
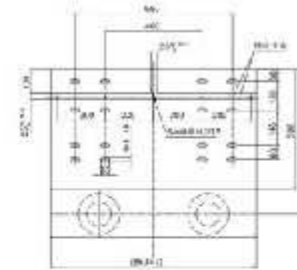
High-speed DKW-25TD

- 1.double station, single head to ten head
2.mold center distance:three 250mm,four 190mm,six 130mm,
eight 100mm,ten 80mm
- 2.Single layer to six layer, can match transparence line
- 3.daily output capacity (24 hours) can reach 20,000-120,000pcs
- 4.can make 0.4-12L plastic hollow products
- 5.suitable for making volume-produce plastic products.



Parameters:
Screw diameter, $\phi 100\text{mm}$
Screw L/D ratio, 30:1
(50HZ) Screw RPM (50Hz) : 10-75 r/min
(PE) Extrusion capacity per hour(PE) : 260kg/h
Number of heaters : 5
Opening stroke, 900mm
Clamping stroke, 240-550mm
(160Bar) Mold clamping force (160Bar) : 30T
Dry cycle time : 5.9s
Wall-thickness Parison control, 100-300dpi
Cooling water consumption, $0.8\text{m}^3/\text{min}(0.3\text{Mpa}, 18^\circ\text{C})$
Compressed air consumption, $4.0\text{m}^3/\text{min}(0.8\text{Mpa})$
Machine net weight : 25T
(L*W*H) Machine dimension, 6200X6000X4300 (mm)

POWER CONSUMPTION:
Inverter motor, 75 KW
(PE) Screw heating capacity(PE) : 27 KW
Hydraulic motor, 37+4 KW
Die-head heating zone power, 26 KW
Maximum Electrical power rating : 169 KW

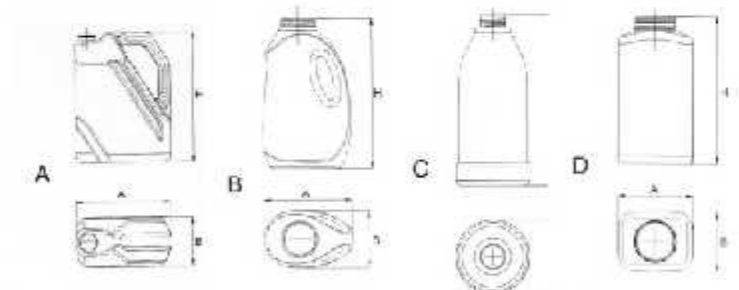


DKW-20TD

双模头 中心距 Double die-head center distance: 280										
A	B	H	A	B	H	Φ	C	H	A	H
280	50	350	280	50	350	180	350	150	350	350
三模头 中心距 Three die-head center distance: 190										
A	B	H	A	B	H	Φ	C	H	A	H
170	50	350	170	50	350	160	350	150	350	350
四模头 中心距 Four die-head center distance: 140										
A	B	H	A	B	H	Φ	C	H	A	H
120	50	350	120	50	350	120	350	120	350	350
五模头 中心距 Five die-head center distance: 100										
A	B	H	A	B	H	Φ	C	H	A	H
80	50	350	80	50	350	85	350	80	350	350
六模头 中心距 Six die-head center distance: 80										
A	B	H	A	B	H	Φ	C	H	A	H
60	50	350	60	50	350	45	350	60	350	350

DKW-25TD

三模头 中心距 Three die-head center distance: 250										
A	B	H	A	B	H	Φ	C	H	A	H
250	50	350	250	50	350	160	350	160	350	350
四模头 中心距 Four die-head center distance: 190										
A	B	H	A	B	H	Φ	C	H	A	H
170	50	350	170	50	350	160	350	160	350	350
六模头 中心距 Six die-head center distance: 120										
A	B	H	A	B	H	Φ	C	H	A	H
120	50	350	120	50	350	110	350	105	350	350
八模头 中心距 Eight die-head center distance: 100										
A	B	H	A	B	H	Φ	C	H	A	H
80	50	350	80	50	350	85	350	80	350	350
十模头 中心距 Ten die-head center distance: 80										
A	B	H	A	B	H	Φ	C	H	A	H
60	50	350	60	50	350	45	350	60	350	350



德科威快速系列 High-speed DKW-30TD

Competitive capacity



China's first 20-30L five layer barrel automatic production line



- 1.double station, single head to three head
- 2.mold center distance: two 320mm
- 3.Single layer to six layer, can match transpance line
- 4.daily output capacity (24 hours) can reach 2,000-60,000pcs
- 5.can make 5-30L plastic hollow products
- 6.suitable for making volume-produce plastic products.

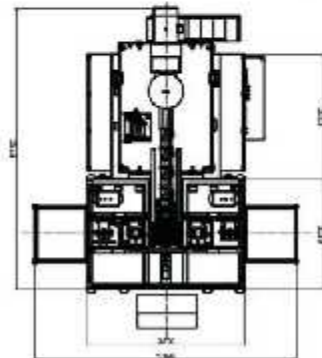
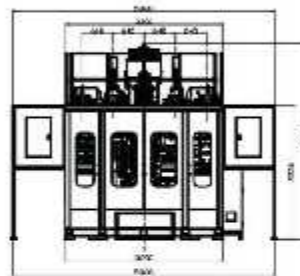
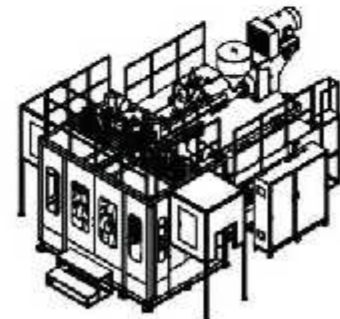
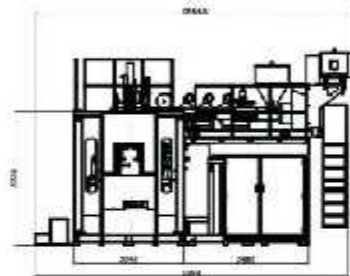
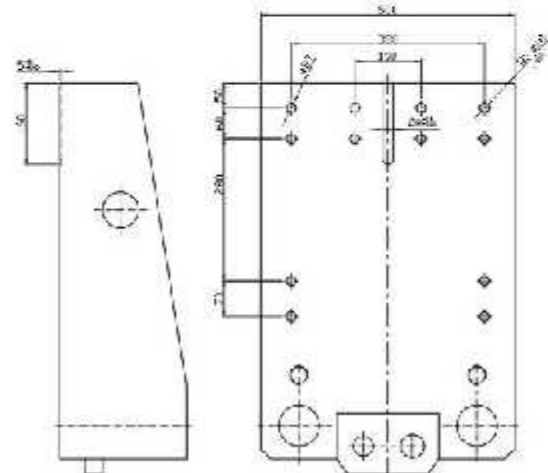
Parameters:

Screw diameter: $\varnothing 90\text{mm}$
 Screw L/D ratio: 30:1
 (50HZ) Screw RPM (50Hz) : 10-75 r/min
 (PE) Extrusion capacity per hour(PE) : 180kg/h
 Number of heaters: 6
 Opening stroke: 640mm
 Clamping stroke: 400-750mm
 (160Bar) Mold clamping force (160Bar): 30T
 Dry cycle time : 6.9s
 Wall-thickness Parison control: 100-300dpi
 Cooling water consumption: $0.6\text{m}^3/\text{min}(0.3\text{Mpa}, 18^\circ\text{C})$
 Compressed air consumption: $4.0\text{m}^3/\text{min}(0.8\text{Mpa})$
 Machine net weight : 22T
 (L*W*H) Machine demansion: $5800 \times 3200 \times 4000(\text{mm})$

POWER CONSUMPTION:

Inverter motor: 55 KW
 (PE) Screw heating capacity(PE): 27 KW
 Hydraulic motor: 37+4 KW
 Die- head heating zone power: 16 KW
 Maximum Electrical power rating : 139 KW

DKW-30TD									
Three die-head		car distance: 320		Diagram					
A	P	L	A	S	F	Φ	H	A	D
280	300	400	280	300	400	280	400	300	400



can realize secondary cooling stereotypes and automatically remove overflow material

